

transdutec  
load cells



**MORE THAN 30 YEAR OF  
PRECISION AND TRANSMISSION**

transdutec  
load cells



# **CATALOGUE 2020**

**[www.transdutec.com](http://www.transdutec.com)**

C/ Indústria b-1 (Pol. In. Les Pedreres)  
08390 Montgat - Barcelona - SPAIN  
+34 933 810 004

V1\_EN



# **TRANSDUTEC**

## **TRADEMARK VALUE**

After more than 30 years designing and manufacturing load cells, Transdutec refreshes and renews to strengthen and give new impetus to the brand.

The company's strategy, in an increasingly competitive and saturated market, is the continuous improvement thinking about the optimization of the product for its different applications.

The history of TRANSDUTEC has been linked to the commitment of an entrepreneurial character.

Now we believe that it is time to strengthen the brand and update it to make a leap in product quality and service.

The board of directors have decided to complement these structural changes at management and production level with a new VISUAL IMAGE that projects the effort of this investment in the processes of manufacturing, design, management, quality control and continuous improvement as the epicenter of our bet as company's philosophy.

**1985**



**2012**



**2020**

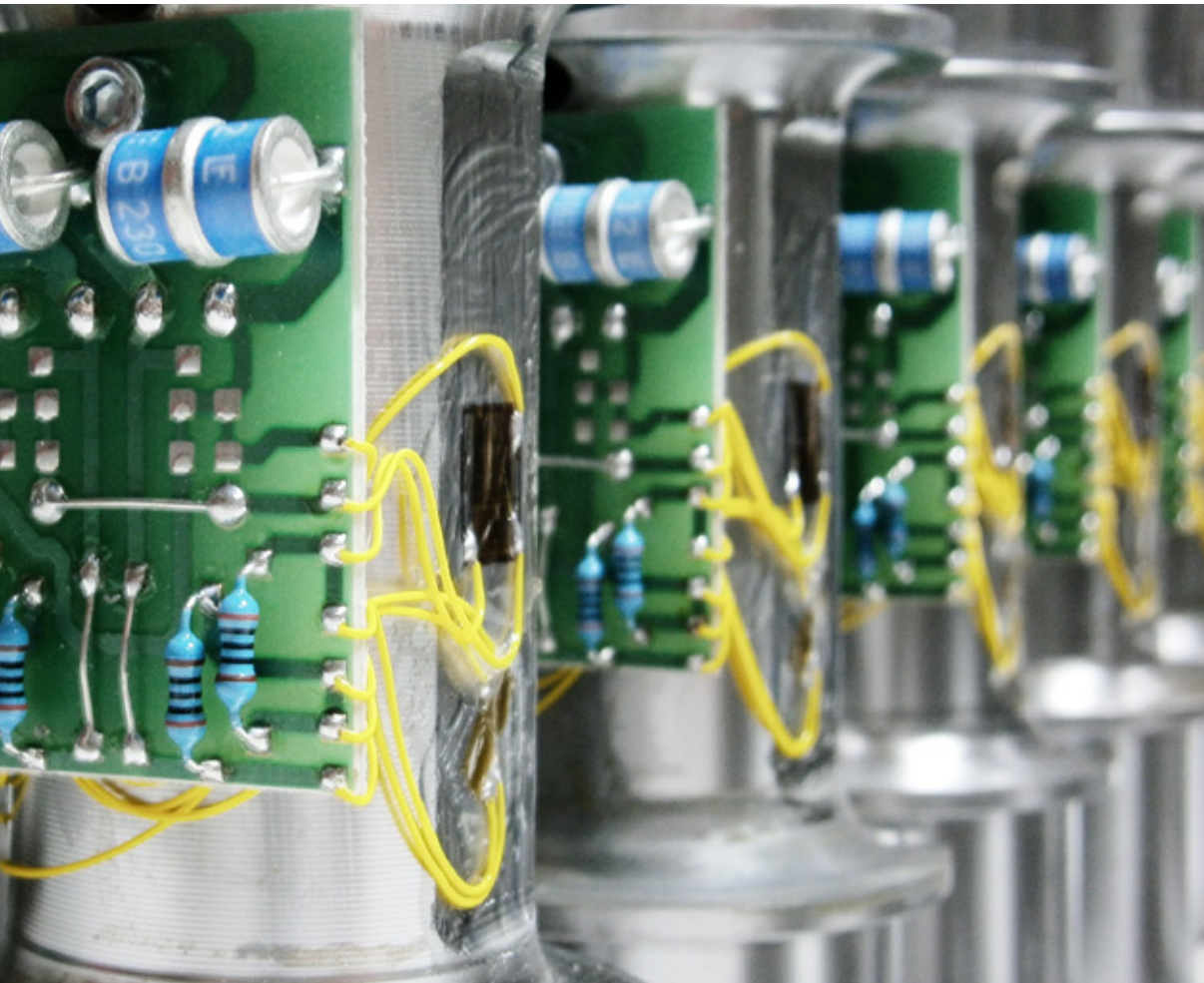




load cells

transdubtec

*From 1985*



## ***QUALITY AND PRECISION DESIGN STRAIN GAGES***

Our activity focuses on manufacturing load cells with our own technology and designs.

We have the appropriate machinery to manufacture load cells, from machining to the end product, subjecting them to a rigorous

process of testing and quality control.

In addition, we expand our catalog with a complete range of high quality weight indicators that provide solutions to different projects with very different needs and requirements.

## ***INSTALLATION AND USE***

Our products are the result of years of experience, not only in manufacturing but also in the support of our customers to properly choose the product and support in its installation.

We review and expand the product catalog to help you at maximum to make your

choice and use. In addition, we maintain direct contact channels via telephone and email to support our customers.

Likewise, our online channels are undergoing renovation to give maximum resources and complete the product range information.



# INDEX

---

**Single point** **6**

---

<u>TPP-1</u> 6	<u>TPF-1A</u> 12
<u>TPP-3</u> 7	<u>TPF-1C</u> 13
<u>TPP-4</u> 8	<u>TPF-16D</u> 14
<u>TPF-1</u> 10	<u>TPF-4</u> 15
<u>TPF-1D</u> 11	

**Bending beam / Shear beam** **16**

---

<u>TCC-1</u> 16	<u>TCC-5</u> 24
<u>TCC-3</u> 18	<u>GS-1Ai</u> 28
<u>TCC-4</u> 20	<u>GS-2i</u> 30

**Tension** **32**

---

<u>TSC-1</u> 32	<u>CTC-1</u> 36
<u>TSC-2</u> 33	<u>CTC-2</u> 37
<u>TSC-5</u> 34	

**Compression** **38**

---

<u>CP-1</u> 38	<u>CP-8CP</u> 44
<u>CP-2</u> 39	<u>CP-11</u> 46
<u>CP-3</u> 40	<u>CP-16</u> 47
<u>CP-8</u> 42	

**Specials** **48**

---

<u>L (X)</u> 48	<u>TB</u> 49
-----------------	--------------

**Amplifiers/Converters** **52**

---

**Accessories** **54**

---

<u>Junction boxes</u> 54	<u>Rod end bearings</u> 58
<u>Load feet</u> 56	

**Weighing indicators** **60**

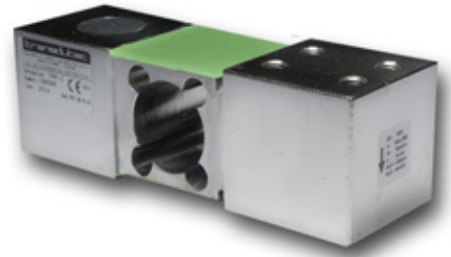
---

**Remote displays** **66**

---

**Guarantee** **68**

---



# TPP-1

50kg CAPACITY

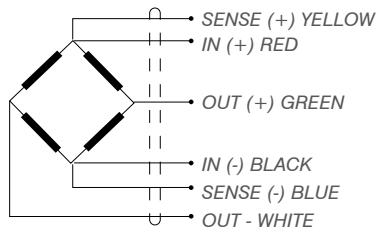
SINGLE POINT

### APPLICATIONS

Bench platform up to 600x600 mm.  
 Hopper weighing

### FEATURES

Single point load cell.  
 Bending beam load cell.  
 Fully stainless steel construction.  
 3000 divisions OIML R60 Class C.  
 Direct platform mounting.  
 High accuracy with off-center loads.  
 Low profile.  
 Protected against humidity IP67 (EN60529).

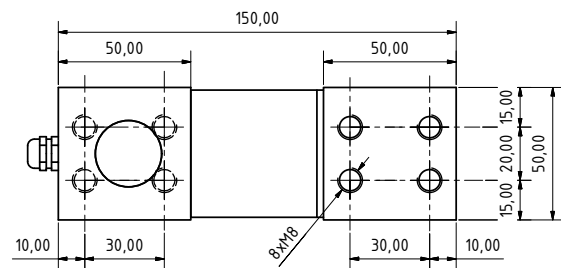
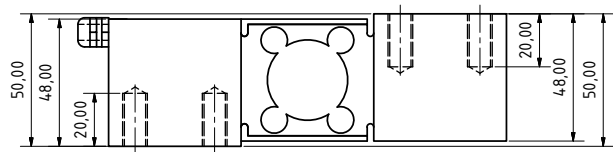


**CE** 3000d OIML Certificate No.R60/1991-GB1-96-02



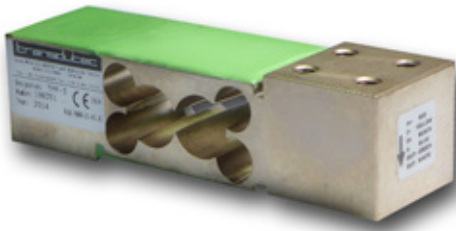
### SPECIFICATIONS

Nominal capacities (LN)	50 kg
Accuracy class	3000 n. OIML
Minimum dead load	0 %Ln
Service load	150 %Ln
Safe load limit	200 %Ln
Maximum combined error	0,017 %Sn
Repeatability error	0.015 %Sn
Temperature effect:	0.01 %Sn/5°C
On zero on sensitivity:	0.006 %Sn/5°C
Creep error	0.016 %Sn
Temperature compensation	-10..40 °C
Temperature limits	-20..50 °C
Nominal sensitivity	2±0.1% mV/V (2)
Nominal input voltage	10 V (2)
Maximum input voltage	15 V (2)
Input impedance	386Ω±2%
Output impedance	350±3Ω
No load output (SN)	2 %Sn
Insulation resistance	> 5000 MΩ
Maximum deflection	0.2-0.6
Cable length	5 m



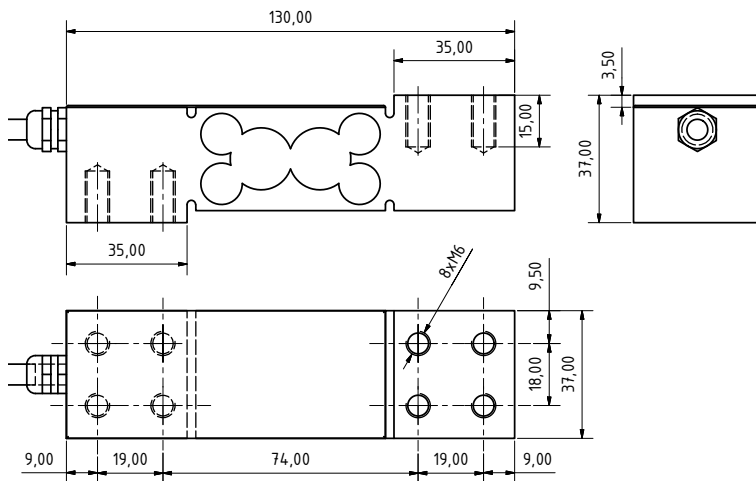
Dimensions (mm)

Reference	Nominal capacities - Ln (kg)	Accuracy class n. OIML	y = emax / vmin	#Code
TPP-1/50	50	C3	12500	710235



### SPECIFICATIONS

Nominal capacities (LN)	50-75-100-150-200 kg
Accuracy class	3000 n. OIML
Minimum dead load	0 %Ln
Service load	150 %Ln
Safe load limit	200 %Ln
Maximum combined error	0,017 %Sn
Repeatability error	0.015 %Sn
Temperature effect:	0.01 %Sn/5°C
On zero on sensitivity:	0.006 %Sn/5°C
Creep error	0.016 %Sn
Temperature compensation	-10..40 °C
Temperature limits	-20..50 °C
Nominal sensitivity	2±0.1% mV/V (2)
Nominal input voltage	10 V (2)
Maximum input voltage	15 V (2)
Input impedance	386Ω±2%
Output impedance	350±3Ω
No load output (SN)	2 %Sn
Insulation resistance	> 5000 MΩ
Maximum deflection	0.2-0.6
Cable length	5 m



Dimensions (mm)

# TPP-3

50 » 200kg CAPACITY

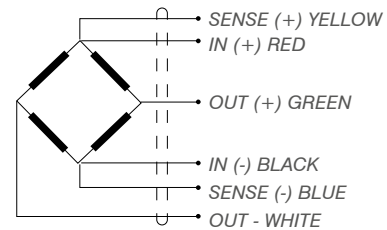
### SINGLE POINT

### APPLICATIONS

Bench platform up to 500x500 mm.  
Hopper weighing.

### FEATURES

Single point load cell.  
Bending beam load cell.  
Fully stainless steel construction.  
3000 divisions OIML R60 Class C.  
Direct platform mounting.  
High accuracy with off-center loads.  
Low profile.  
Protected against humidity IP67 (EN60529).



CE 3000d OIML Certificate No.R60/2000-ES-03.03

Reference	Nominal capacities - Ln (kg)	Accuracy class n. OIML	y = emax / vmin	#Code
TPP-3/50	50	C3	9433	710236
TPP-3/75	75	C3	9433	710237
TPP-3/100	100	C3	9433	710238
TPP-3/150	150	C3	9433	710239
TPP-3/200	200	C3	9433	710240





# TPP-4

## 100 » 500kg CAPACITY

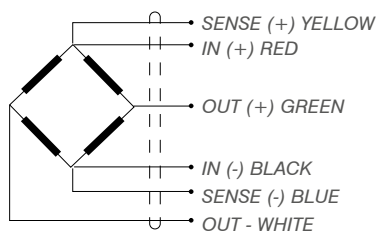
### SINGLE POINT

#### APPLICATIONS

Bench platform up to 600x600 mm.  
Hopper weighing.

#### FEATURES

Single point load cell.  
Bending beam load cell.  
Fully stainless steel construction.  
3000 divisions OIML R60 Class C.  
Direct platform mounting.  
High accuracy with off-center loads.  
Low profile.  
Protected against humidity IP68 (EN60529).

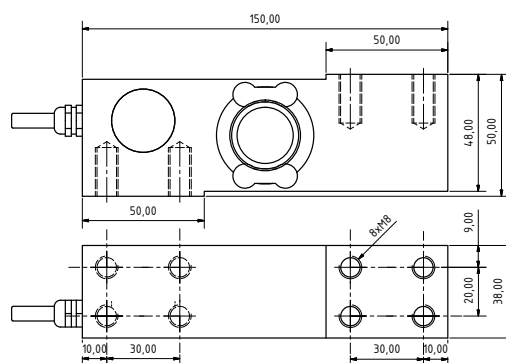


**CE** 3000d OIML Certificate No.R60/2000-ES1-03.04



#### SPECIFICATIONS

Nominal capacities (LN)	100-150-200-300-360-500 kg
Accuracy class	3000 n. OIML
Minimum dead load	0 %Ln
Service load	150 %Ln
Safe load limit	200 %Ln
Maximum combined error	< ± 0,017 %Sn
Repeatability error	< ± 0.015 %Sn
Temperature effect:	0.01 %Sn/5°C
On zero on sensitivity:	0.006 %Sn/5°C
Creep error	0.016 %Sn
Temperature compensation	-10..40 °C
Temperature limits	-20..50 °C
Nominal sensitivity	2 ± 0.1% mV/V (2)
Nominal input voltage	10 V
Maximum input voltage	18 V
Input impedance	386Ω ± 2%
Output impedance	350 ± 3Ω
No load output (SN)	< ± 2 %Sn
Insulation resistance	> 5000 MΩ
Maximum deflection	0.2-0.5 mm
Cable length	5 m



Reference	Nominal capacities - Ln (kg)	Accuracy class n. OIML	y = emax / vmin	#Code
TPP-4/100	100	C3	10000	710241
TPP-4/150	150	C3	10000	710242
TPP-4/200	200	C3	10000	710243
TPP-4/300	300	C3	10000	710244
TPP-4/360	360	C3	10000	710245
TPP-4/500	500	C3	10000	710246









# TPF-1

5 » 40kg CAPACITY

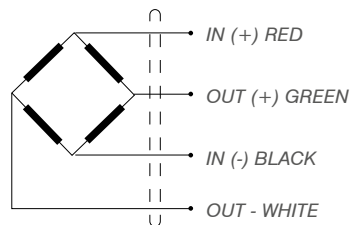
## SINGLE POINT

### APPLICATIONS

Bench platform up to 400x400 mm.

### FEATURES

- Single point load cell.
- Bending beam load cell.
- Fully stainless steel construction.
- 3000 divisions OIML R60 Class C.
- Direct platform mounting.
- High accuracy with off-center loads.
- Low profile.
- Protected against humidity IP66(EN60529).

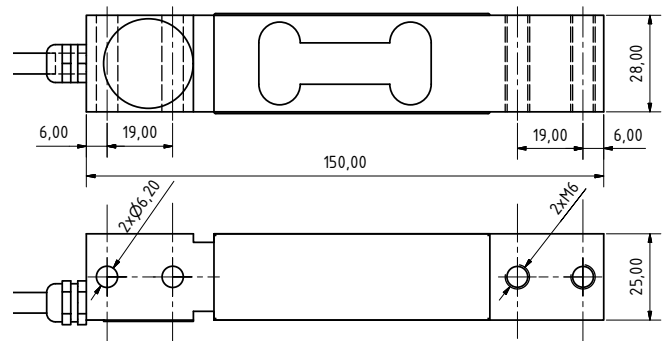


**CE** 3000d OIML Certificate N°.R60/1991-GB1-97.03



### SPECIFICATIONS

Nominal capacities (LN)	5-10-15-18-20-25-30-35-40 kg
Accuracy class	3000 n. OIML
Minimum dead load	0 %Ln
Service load	150 %Ln
Safe load limit	200 %Ln
Maximum combined error	< ± 0,017 %Sn
Repeatability error	< ± 0.015 %Sn
Temperature effect:	< ± 0.01 %Sn/5°C
On zero on sensitivity:	< ± 0.006 %Sn/5°C
Creep error	< ± 0.016 %Sn
Temperature compensation	-10..40 °C
Temperature limits	-20..50 °C
Nominal sensitivity	2±0.1% mV/V (2)
Nominal input voltage	10 V
Maximum input voltage	15 V
Input impedance	386Ω±2%
Output impedance	350±3Ω
No load output (SN)	< ±2 %Sn
Insulation resistance	> 5000 MΩ
Maximum deflection	0.2-0.4 mm
Cable length	5 m



Dimensions (mm)

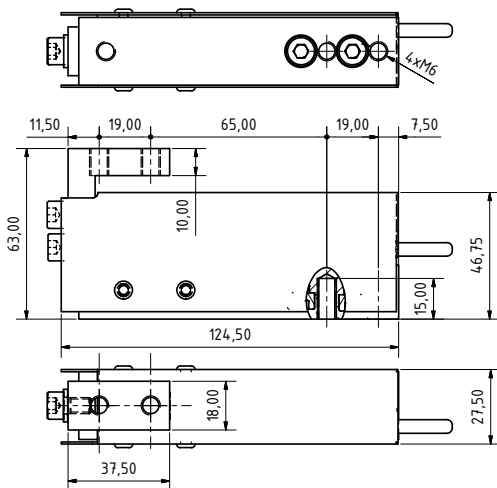
Reference	Nominal capacities - Ln (kg)	Accuracy class n. OIML	y = emax / vmin	Platform	#Code
TPF-1/5 <b>M</b>	5	3000	7690	400 x 300	710202
TPF-1/10	10	3000	7690	300 x 400	710203
TPF-1/15	15	3000	7690	400 x 400	710204
TPF-1/20	20	3000	7690	400 x 400	710205
TPF-1/25	25	3000	7690	400 x 400	710272
TPF-1/30	30	3000	7690	400 x 400	710206
TPF-1/35	35	3000	7690	400 x 400	710207
TPF-1/40 <b>M</b>	40	3000	7690	400 x 400	710208





### SPECIFICATIONS

Nominal capacities (LN)	2-3-5 kg
Accuracy class	3000 n. OIML
Minimum dead load	0 %Ln
Service load	150 %Ln
Safe load limit	200 %Ln
Maximum combined error	< ± 0,017 %Sn
Repeatability error	< ± 0.015 %Sn
Temperature effect:	< ± 0.01 %Sn/5°C
On zero on sensitivity:	< ± 0.006 %Sn/5°C
Creep error	< ± 0.016 %Sn
Temperature compensation	-10..40 °C
Temperature limits	-20..50 °C
Nominal sensitivity	2±0.1% mV/V (2)
Nominal input voltage	10 V
Maximum input voltage	15 V
Input impedance	400Ω±2%
Output impedance	350±3Ω
No load output (SN)	< ±2 %Sn
Insulation resistance	> 5000 MΩ
Maximum deflection	0.2-0.4 mm
Cable length	5 m



Dimensions (mm)

# TPF-1D

2 » 5kg CAPACITY

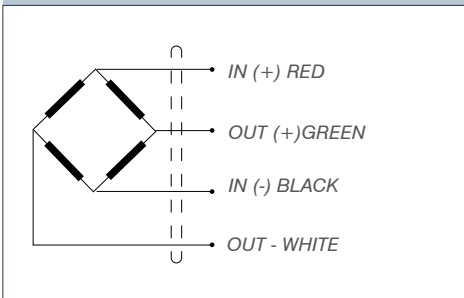
### SINGLE POINT

### APPLICATIONS

Bench platform up to 400x400 mm.

### FEATURES

- Single point load cell.
- Bending beam load cell.
- Aluminum construction.
- 3000 divisions OIML R60 Class C.
- Direct platform mounting.
- High accuracy with off-center loads.
- Low profile.
- Protected against humidity IP66 (EN60529).



Reference	Nominal capacities - Ln (kg)	Accuracy class n. OIML	y = emax / vmin	#Code
TPF-1D/2	2	3000	7500	710226
TPF-1D/3	3	3000	7500	710227
TPF-1D/5	5	3000	7500	710228





# TPF-1A

5 » 30kg CAPACITY

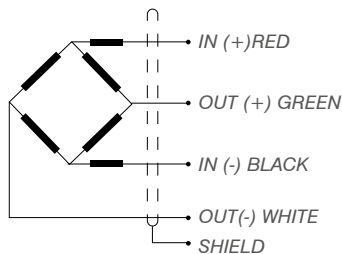
## SINGLE POINT

### APPLICATIONS

Bench platform up to 400 x 400 mm.  
Tanks y Hopper weighing.

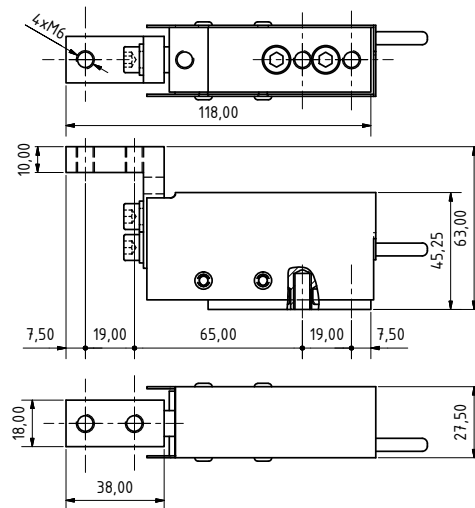
### FEATURES

Single point load cell.  
Bending beam load cell.  
3000 divisions OIML R60 Class C.  
Direct platform mounting.  
High accuracy with off-center loads.  
Protected against centered overload.  
Protected against humidity IP65.



### SPECIFICATIONS

Nominal capacities	5-7.5-10-15-20-25-30 kg
Input impedance	386Ω±2%
Output impedance	350±3Ω
Accuracy class	3000
Input voltage range	5..12 V
Nominal sensitivity	2mV/V
Operating temperature range	-10 a +50°C
Sensitivity tolerance	+/- 0.1% (N.L.)
Service load	150% (N.L.)
Safe load limit	> 200 % (N.L.)
Temperature effect on sensitivity	(-10...+40°C): < +/-0.001%/°C
Temperature effect on zero	(-10...+50°C): < +/-0.002%/°C
Maximum combined error	< +/- 0.02 (N.L.)
Creep in 30' at 20°C	+/- 0.02%
Cable length	5 m



Dimensions (mm)

Reference	Nominal capacities - Ln (kg)	Accuracy class n. OIML	y = emax / vmin	Platform (mm)	#Code
TPF-1A/5	5	3000	7500	400 x 300	710215
TPF-1A/7.5	7.5	3000	7500	300 x 400	710216
TPF-1A/10	10	3000	7500	400 x 400	710217
TPF-1A/15	15	3000	7500	400 x 400	710272
TPF-1A/20	20	3000	7500	400 x 400	710273
TPF-1A/25	25	3000	7500	400 x 400	710219
TPF-1A/30	30	3000	7500	400 x 400	710220





### SPECIFICATIONS

Nominal capacities	5-10-15-20-30 kg
Input impedance	386Ω±2%
Output impedance	350±3Ω
Accuracy class	3000
Input voltage range	5..12 V
Nominal sensitivity	2mV/V
Operating temperature range	-10 a +50°C
Sensitivity tolerance	+/- 0.1% (N.L.)
Service load	150% (N.L.)
Safe load limit	> 200 % (N.L.)
Temperature effect on sensitivity	(-10...+40°C): < +/-0.001%/°C
Temperature effect on zero	(-10...+50°C): < +/-0.002%/°C
Maximum combined error	< +/- 0.02 (N.L.)
Creep in 30' at 20°C	+/- 0.02%
Cable length	5 m

# TPF-1C

5 » 30kg CAPACITY

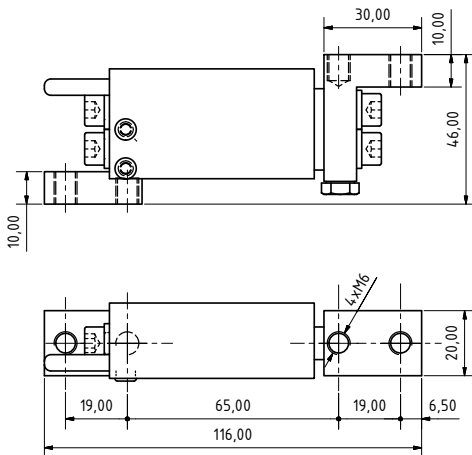
### SINGLE POINT

### APPLICATIONS

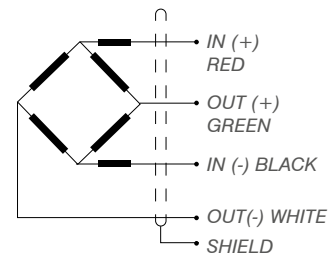
Bench platform up to 400x400 mm.

### FEATURES

- Single point load cell.
- Bending beam load cell.
- 3000 divisions OIML R60 Class C.
- Direct platform mounting.
- High accuracy with off-center loads.
- Protected against centered overload.
- Low profile.
- Fully stainless steel construction.
- Protected against humidity IP66 (EN60529).



Dimensions (mm)



Reference	Nominal capacities - Ln (kg)	Accuracy class n. OIML	y = emax / vmin	Platform (mm)	#Code
TPF-1C/5	5	3000	7500	400 x 300	710221
TPF-1C/10	10	3000	7500	300 x 400	710222
TPF-1C/15	15	3000	7500	400 x 400	710223
TPF-1C/20	20	3000	7500	400 x 400	710224
TPF-1C/30	30	3000	7500	400 x 400	710225



# TPF-16D

## 18 » 40kg CAPACITY

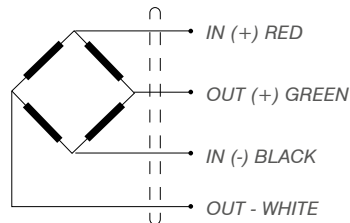
### SINGLE POINT

#### APPLICATIONS

Bench platform up to 400x400 mm.

#### FEATURES

- Single point load cell.
- Bending beam load cell.
- Low profile.
- Fully stainless steel construction.
- 3000 divisions OIML R60 Class C.
- Direct platform mounting.
- High accuracy with off-center loads.
- Protected against humidity IP66 (EN60529).

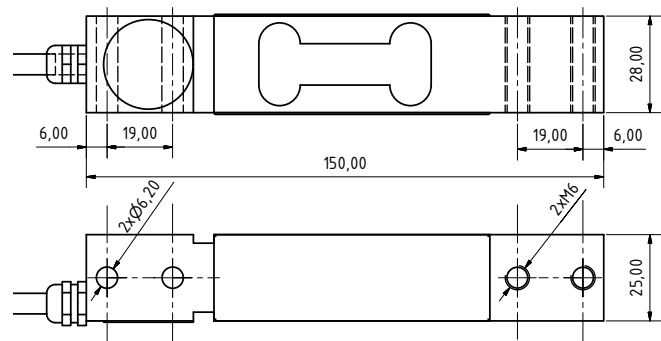


**CE** 6000d OIML Certificate No.R60/1991-ES-99.02



#### SPECIFICATIONS

Nominal capacities (LN)	18-20-25-30-35-40 kg
Accuracy class	6000 n. OIML
Minimum dead load	0 %Ln
Service load	150 %Ln
Safe load limit	200 %Ln
Maximum combined error	< ± 0,017 %Sn
Repeatability error	< ± 0.015 %Sn
Temperature effect:	< ± 0.01 %Sn/5°C
On zero on sensitivity:	< ± 0.006 %Sn/5°C
Creep error	< ± 0.016 %Sn
Temperature compensation	-10..40 °C
Temperature limits	-20..50 °C
Nominal sensitivity	2±0.1% mV/V (2)
Nominal input voltage	10 V
Maximum input voltage	15 V
Input impedance	386Ω±2%
Output impedance	350±3Ω
No load output (SN)	< ± 2 %Sn
Insulation resistance	> 5000 MΩ
Maximum deflection	0.2-0.4 mm
Cable length	5 m



Dimensions (mm)

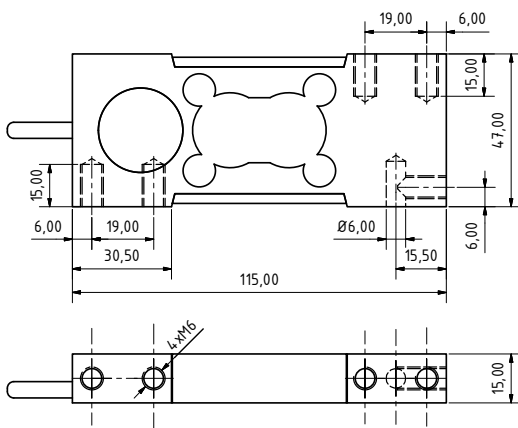
Reference	Nominal capacities - Ln (kg)	Accuracy class n. OIML	y = emax / vmin	Platform (mm)	#Code
TPF-16D/18	18	6000	11500	400 x 400	710209
TPF-16D/20	20	6000	11500	400 x 400	710210
TPF-16D/25	25	6000	11500	400 x 400	710211
TPF-16D/30	30	6000	11500	400 x 400	710212
TPF-16D/35	35	6000	11500	400 x 400	710213
TPF-16D/40	40	6000	11500	400 x 400	710214





### SPECIFICATIONS

Nominal capacities	8-10-15-20-30-40 kg
Input impedance	386Ω±2%
Output impedance	350±3Ω
Accuracy class	3000
Input voltage range	5..12 V
Nominal sensitivity	2mV/V
Operating temperature range	-10 a +50°C
Sensitivity tolerance	+/- 0.1% (N.L.)
Service load	150% (N.L.)
Safe load limit	> 200 % (N.L.)
Temperature effect on sensitivity	(-10...+40°C): < +/-0.001%/°C
Temperature effect on zero	(-10...+50°C): < +/-0.002%/°C
Maximum combined error	< +/- 0.02 (N.L.)
Creep in 30' at 20°C	+/- 0.02%
Cable length	5 m



Dimensions (mm)

# TPF-4

8 » 40 kg CAPACITY

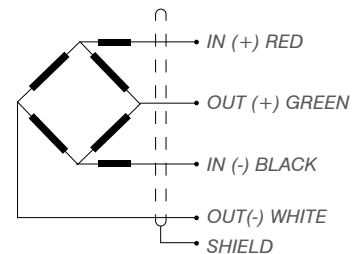
### SINGLE POINT

### APPLICATIONS

Bench platform up to 400x400 mm.  
8 kg - 400 x 300 mm  
10 kg - 300 x 400 mm

### FEATURES

- Single point load cell.
- Bending beam load cell.
- 3000 divisions OIML R60 Class C.
- Direct platform mounting.
- High accuracy with off-center loads.
- Low profile.
- Fully stainless steel construction.
- Protected against humidity IP66 (EN60529)



CE 3000d OIML Certificate No.R60/2000-GB1-08.07

Reference	Nominal capacities - Ln (kg)	Accuracy class n. OIML	y = emax / vmin	Platform (mm)	#Code
TPF-4/8	8	3000	4000	400 x 300	710229
TPF-4/10	10	3000	4000	300 x 400	710230
TPF-4/15	15	3000	4000	400 x 400	710231
TPF-4/18	18	3000	4000	400 x 400	710232
TPF-4/35	35	3000	4000	400 x 400	710233
TPF-4/40	40	3000	4000	400 x 400	710234





# TCC-1

## 15 » 1500kg CAPACITY

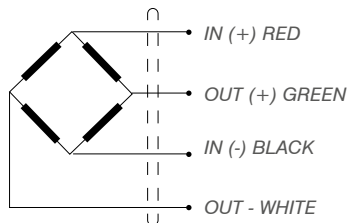
BENDING BEAM / SHEAR BEAM

### APPLICATIONS

Platforms 4 load cells.  
 Silos, Hopper weighing y Tanks.

### FEATURES

Bending beam load cell/shear beam.  
 3000 divisions OIML R60 Class C.  
 Hermetically sealed by laser welding.  
 Stainless steel construction.  
 Protected against humidity IP67  
 (de 15 a 150kg).  
 Protected against humidity IP68  
 (de 250 a 300 kg).

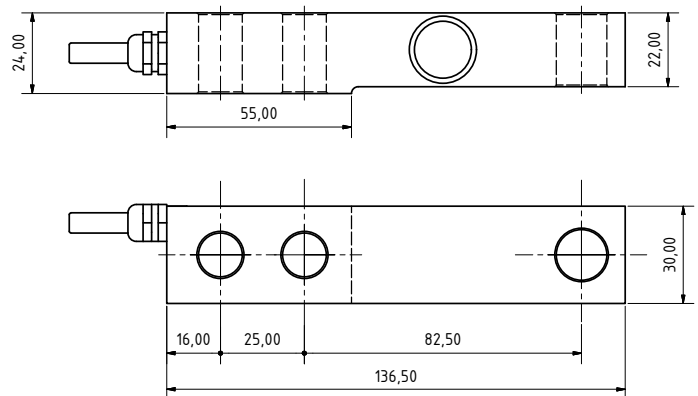


**CE** 3000d OIML Certificate No.R60/1991-ES1-99.01



### SPECIFICATIONS

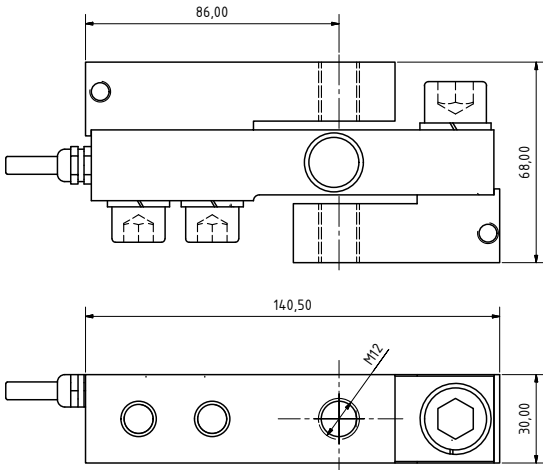
Nominal capacities	15-30-50-75-100-150-250-300 500-750-1000-1500kg
Accuracy class	3000
Input impedance	386Ω±2%
Output impedance	350±3Ω
Nominal sensitivity	2mV/V
Input voltage range	5..12 V
Sensitivity tolerance	+/- 0.1% (N.L.)
Operating temperature range	-10 a +50°C
Temperature effect on sensitivity	(-10...+40°C): < +/-0.001%/°C
Service load	150% (N.L.)
Temperature effect on zero	(-10...+50°C): < +/-0.002%/°C
Safe load limit	> 200 % (N.L.)
Maximum combined error	< +/- 0.02 (N.L.)
Creep in 30' at 20°C	+/- 0.02%
Cable length	4 m
Electrical connection	de 4 a 6 wires



Dimensions (mm)

Reference	Nominal capacities - Ln (kg)	Accuracy class n. OIML	y = emax / vmin	#Code
TCC-1/15	M 15	3000	8500	710137
TCC-1/30	M 30	3000	8500	710138
TCC-1/50	M 50	3000	8500	710139
TCC-1/75	M 75	3000	8500	710140
TCC-1/100	M 100	3000	8500	710141
TCC-1/150	M 150	3000	8500	710142
TCC-1/250	M 250	3000	8500	710143
TCC-1/300	300	3000	8500	710144
TCC-1/500	500	3000	8500	710145
TCC-1/750	750	3000	8500	710146
TCC-1/1000	1000	3000	8500	710147
TCC-1/1500	1500	3000	8500	710148





Dimensions en (mm)

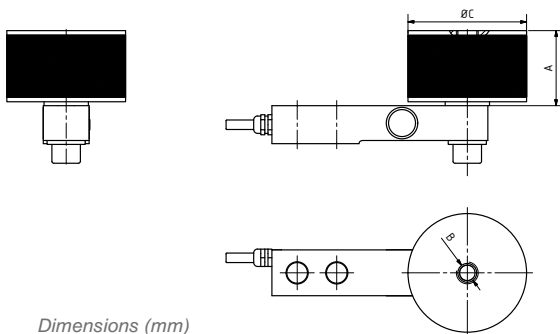


# TCC-1

## ACCESSORIES

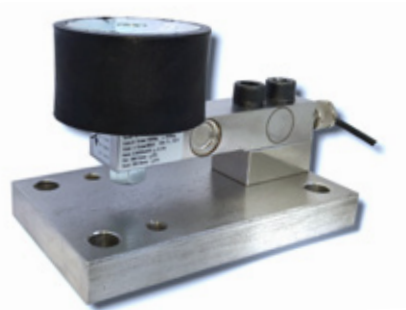
### TENSION ACCESSORY

Ref.	Description	#Code
PTCC-1	Tension accessory NL from 30 to 1500 kg. M12	510058



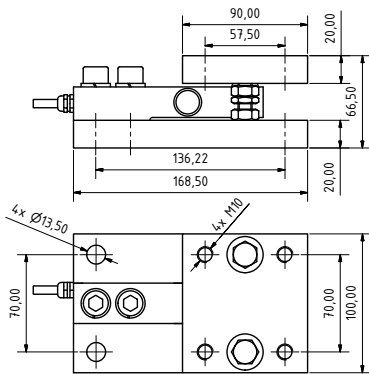
Dimensions (mm)

CN. up to (kg)	A	B	C
300	52.5	M12	70
500	47.5	M12	75
1000	42.5	M16	100



### SILENT-BLOCK

Ref.	Description	#Code
STCC-1	Silent-block	510042

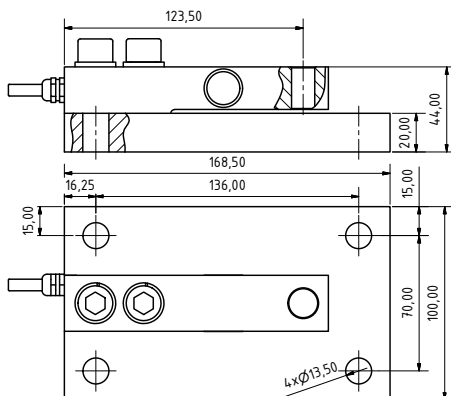


Dimensions en (mm)



### MOUNTING KIT FOR SILOS. LIFT OFF PROTECTION

Ref.	Description	#Code
AVTCC-1	Mounting kit for silos. Lift-off protection.	510034
AVTCC-1I	Mounting kit for silos. Lift-off protection. INOX	510035



Dimensions en (mm)



### BASE PLATE

Ref.	Description	#Code
BTCC-1	Base plate	510065





# TCC-3

## 2000 » 5000kg

CAPACITY

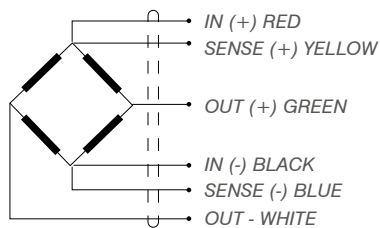
### SHEAR BEAM LOAD CELL

#### APPLICATIONS

Platforms 4 load cells.  
 Silos, Hopper weighing y Tanks.

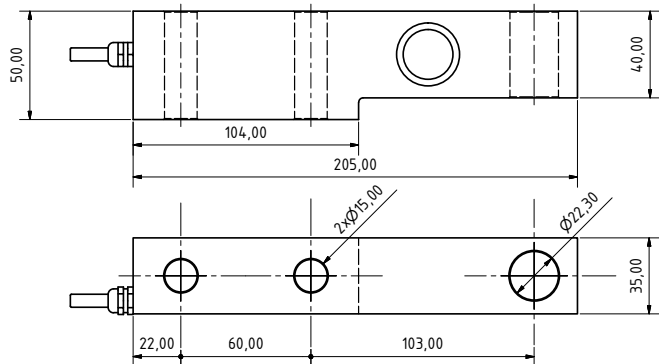
#### FEATURES

Shear beam load cell.  
 3000 divisions OIML R60 Class C.  
 Hermetically sealed by laser welding.  
 Stainless steel construction.  
 Protected against humidity IP68 (EN60529).



#### SPECIFICATIONS

Nominal capacities	2000-3000-5000 kg
Accuracy class	3000
Input impedance	386Ω ± 2%
Output impedance	350 ± 3Ω
Input voltage range	5..12 V
Nominal sensitivity	2mV/V
Operating temperature range	-10 a +50°C
Service load	150% (N.L.)
Safe load limit	> 200 % (N.L.)
Sensitivity tolerance	+/- 0.1% (N.L.)
Temperature effect on sensitivity	(-10... +40°C): < +/- 0.001%/°C
Temperature effect on zero	(-10... +50°C): < +/- 0.002%/°C
Maximum combined error	< +/- 0.02 (N.L.)
Creep en	30' a 20°C: +/- 0.02%
Cable length	9 m
Electrical connection	a 6 wires (sense)

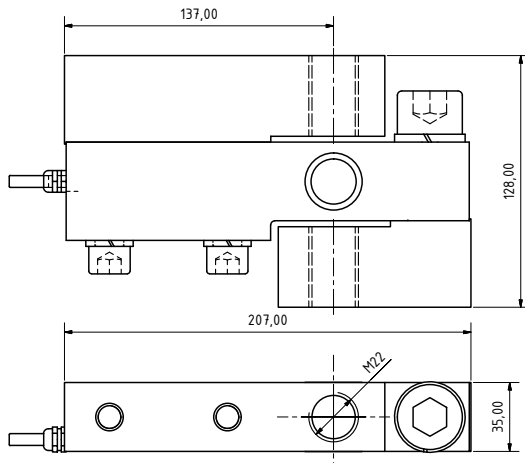


Dimensions (mm)

Reference	Nominal capacities - Ln (kg)	Accuracy class n. OIML	y = emax / vmin	#Code
TCC-3/2000	2000	3000	7500	710149
TCC-3/3000	3000	3000	7500	710150
TCC-3/5000	5000	3000	7500	710151



# TCC-3 ACCESSORIES

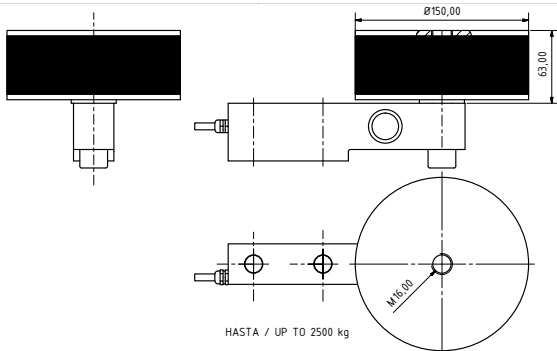


Dimensions en (mm)



## TENSION ACCESSORY

Ref.	Description	#Code
PTCC-3	Tension accessory M22	510059



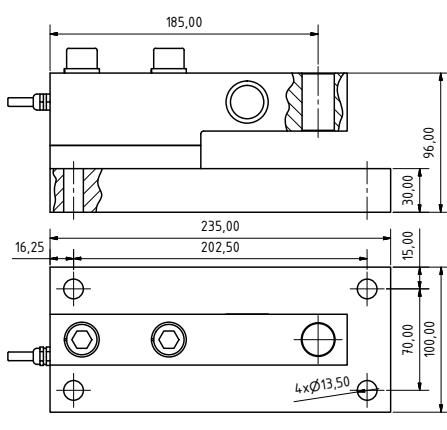
Dimensions en (mm)



## SILENT-BLOCK

Accessory	C.N. (kg)	A	B	C	D	E
STCC-3	2000-3000	M16	150	61	111	185

Ref.	Description	#Code
STCC-3	Silent-block M16	510043



Dimensions en (mm)



## BASE PLATE

Ref.	Description	#Code
BTCC-3	Base plate	510066





# TCC-4

## 300 » 2500 kg

CAPACITY

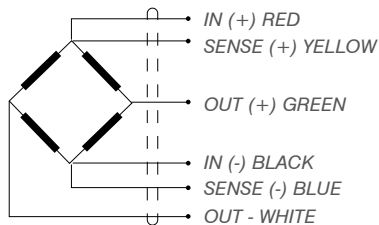
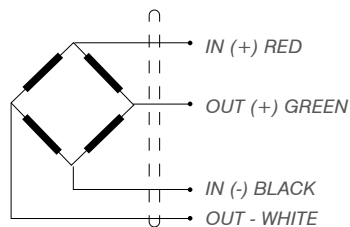
SHEAR BEAM LOAD CELL

### APPLICATIONS

Platforms 4 load cells.  
 Silos, Hopper weighing y Tanks.

### FEATURES

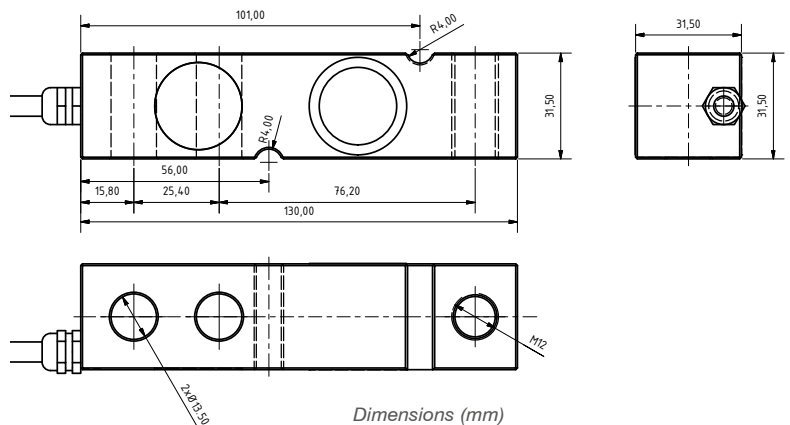
Shear beam load cell.  
 3000 divisions OIML R60 Class C.  
 Fully stainless steel construction.  
 Hermetically sealed by laser welding.  
 Protected against humidity IP68 (EN60529).



### SPECIFICATIONS

Nominal capacities (Ln)	300-500-750-1000-1500-2000-2500 kg
Accuracy class	C3 n. OIML
Minimum dead load	0 %Ln
Service load	125 %Ln
Safe load limit	150 %Ln
Maximum combined error	0,017% N.L
Repeatability error	< ±0.015 %Sn
Temperature effect:	< ±0.01 %Sn/5 °C
On zero on sensitivity	< ±0.006 %Sn/5 °C
Creep error (30 minutes)	< ±0.016 %Sn
Compensated temperature range	-10.. +40 °C
Temperature limits	-20...+70 °C
Input voltage range	5..12 V
Input impedance	383Ω±2% ó 1100Ω±2%
Output impedance	350±3Ω ó 1000±3Ω
Nominal sensitivity (Sn)	2 mV/V ±1%
Insulation resistance	> 5000 MΩ
Cable length	5 m

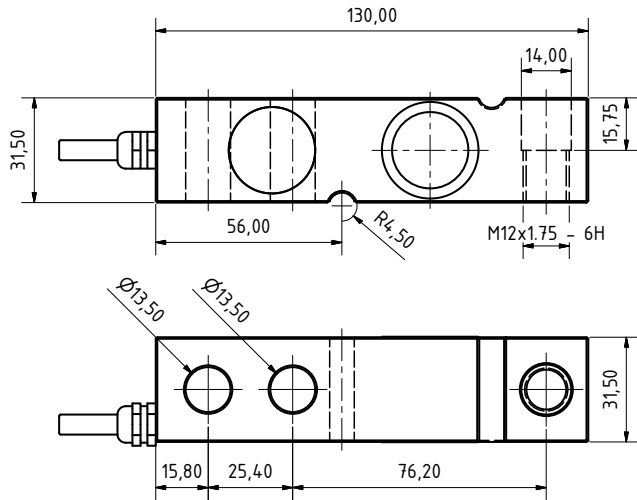
### LOAD CELL TCC-4



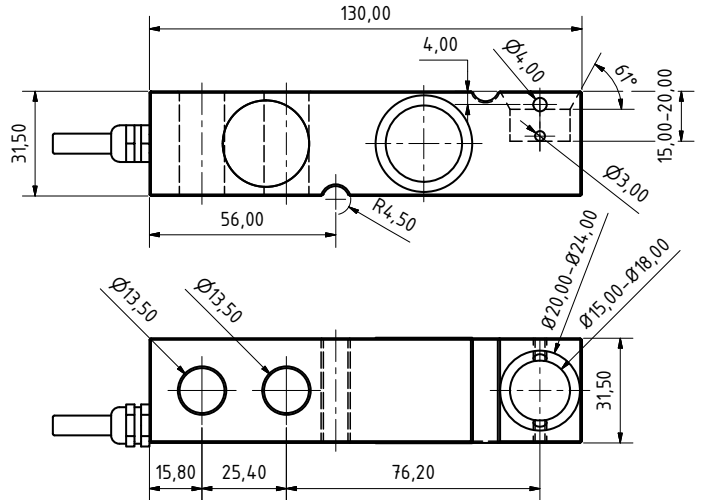
**CE** 3000d OIML Certificate No.R60/2000-ES-04.01  
 E-18.02.C04



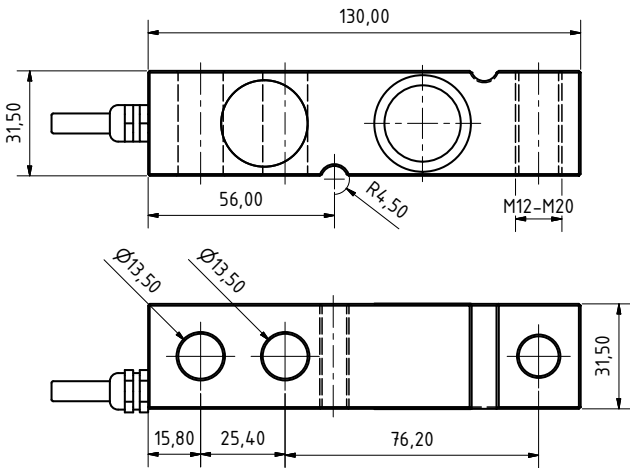
**LOAD CELL TCC-4a**



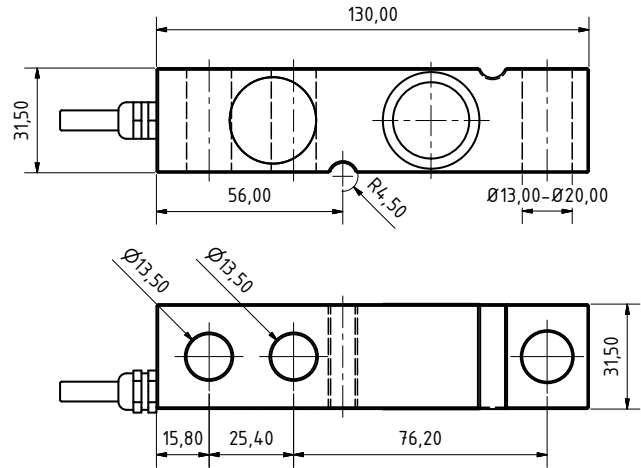
**LOAD CELL TCC-4c**



**LOAD CELL TCC-4b**



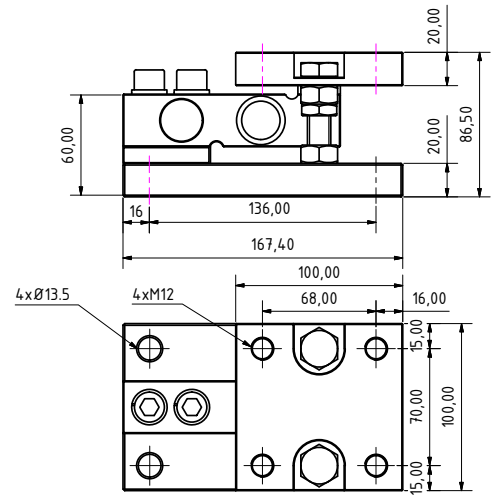
**LOAD CELL TCC-4d**



Reference	Nominal capacities Ln (kg)	Accuracy class n. OIML	y = emax / vmin	#Code TCC-4	#Code TCC-4a	#Code TCC-4b	#Code TCC-4c	#Code TCC-4d
TCC-4/300	300	C3	10000	710152	710153	710154	710155	710156
TCC-4/500	500	C3	10000	710157	710158	710159	710160	710161
TCC-4/750	750	C3	10000	710162	710163	710164	710165	710166
TCC-4/1000	1000	C3	10000	710167	710168	710169	710170	710171
TCC-4/1500	1500	C3	10000	710172	710173	710174	710175	710176
TCC-4/2000	2000	C3	10000	710177	710178	710179	710180	710181
TCC-4/2500	2500	C3	10000	710182	710183	710184	710185	710186

# TCC-4

## ACCESSORIES



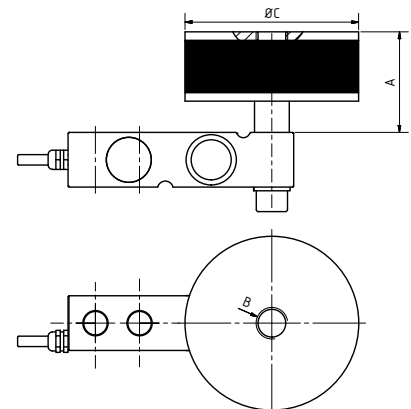
Dimensions en (mm)

### SILOS ACCESSORY

Ref.	Description	#Code
AVTCC-4	Mounting kit for silos. Lift off protection. Zinc-plated	510037
AVTCC-4i	Mounting kit for silos. Lift off protection. INOX	510055



C.N. (kg)	A	B	C
300	68	M12	70
500	63	M12	75
1000	58	M16	100
2000	78	M16	150



Dimensions en (mm)

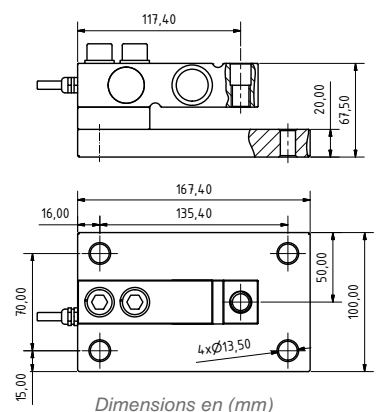
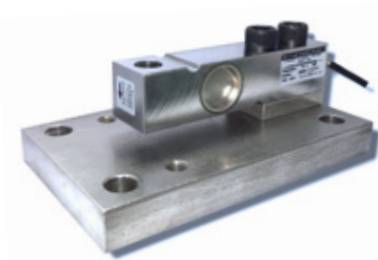
### SILENT-BLOCK

Ref.	Description	#Code
STCC-4	Silent-Block TCC-4	510044



### SELF-CENTERING LOAD FOOT

Ref.	Description	#Code
PPM-12	Self-centering load foot M12 steel	510029
PPM-12i	Self-centering load foot M12 stainless steel	510030

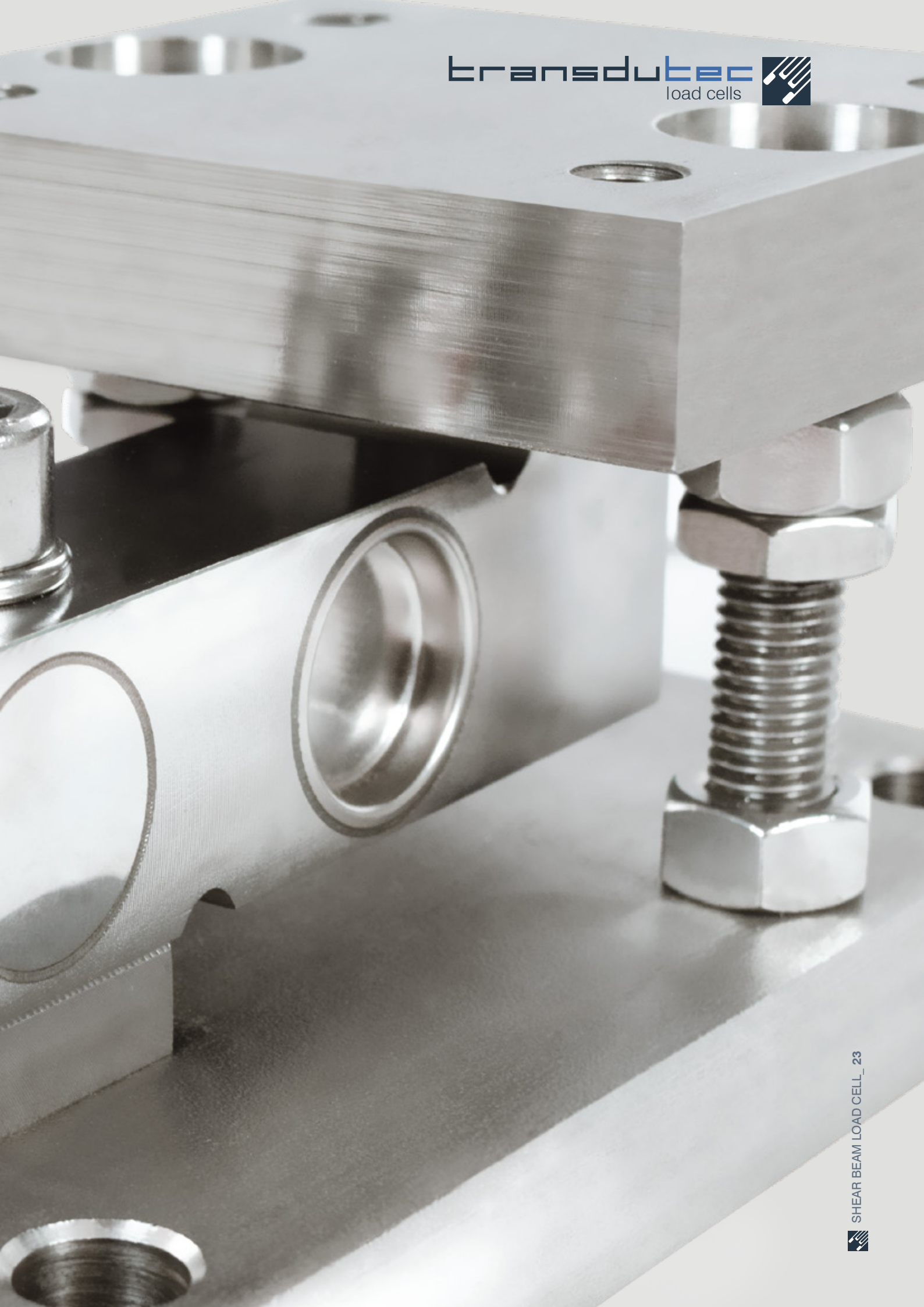


Dimensions en (mm)

### BASE PLATE

Ref.	Description	#Code
BTCC-4	Base plate zinc plated steel	510067
BTCC-4i	Base plate stainless steel	510094







# TCC-5

## 3000 » 7500 kg

CAPACITY

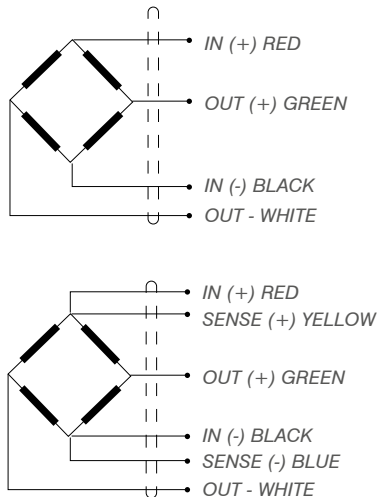
SHEAR BEAM LOAD CELL

### APPLICATIONS

Platforms 4 load cells.  
 Silos, Hopper weighing.

### FEATURES

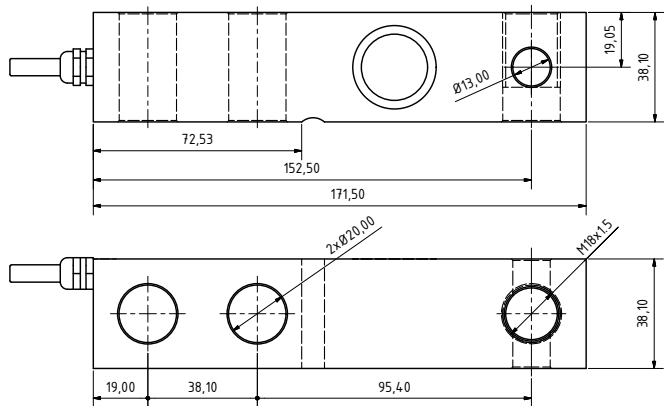
Shear beam load cell.  
 3000 divisions OIML R60 Class C.  
 Fully stainless steel construction.  
 Hermetically sealed by laser welding.  
 Protected against humidity IP68 (EN60529).



### SPECIFICATIONS

Nominal capacities (Ln)	3000-5000-7500 kg
Accuracy class	C3 n. OIML
Minimum dead load	0 %Ln
Service load	125 %Ln
Safe load limit	150 %Ln
Maximum combined error	0,017% N.L
Repeatability error	< ±0.015 %Sn
Temperature effect:	< ±0.01 %Sn/5 °C
On zero on sensitivity	< ±0.006 %Sn/5 °C
Creep error (30 minutes)	< ±0.016 %Sn
Compensated temperature range	-10.. +40 °C
Temperature limits	-20...+70 °C
Input voltage range	5..12 V
Input impedance	383Ω±2% ó 1100Ω±2%
Output impedance	350±3Ω ó 1000±3Ω
Nominal sensitivity (Sn)	2 mV/V ±1%
Insulation resistance	> 5000 MΩ
Cable length	5 m

### LOAD CELL TCC-5



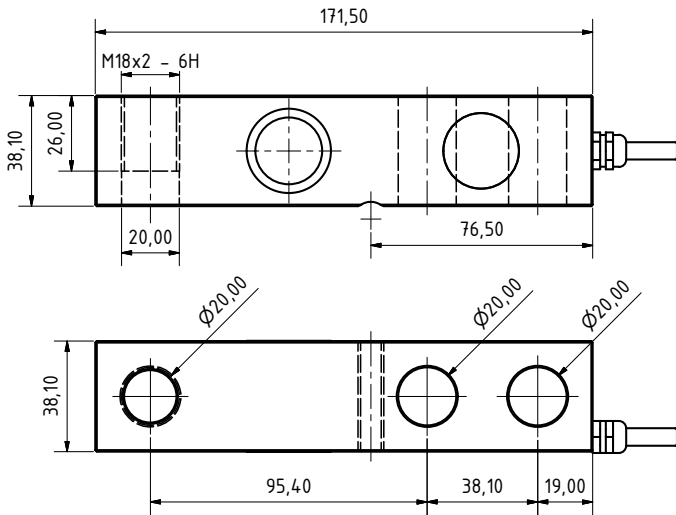
Dimensions (mm)

**CE** 3000d OIML Certificate N° E-18.02.C04

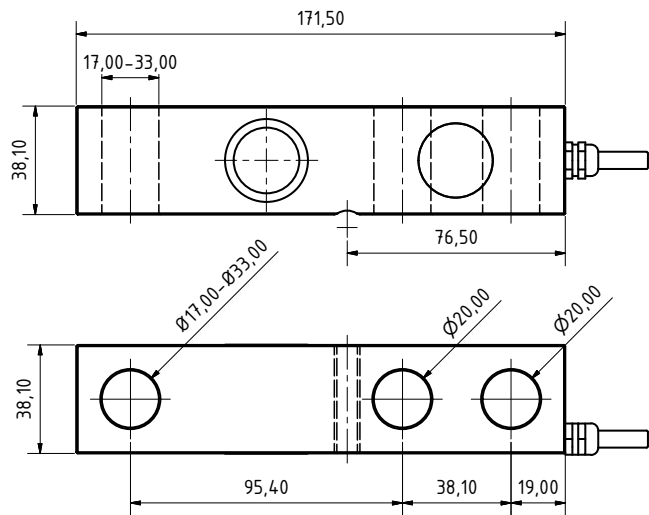




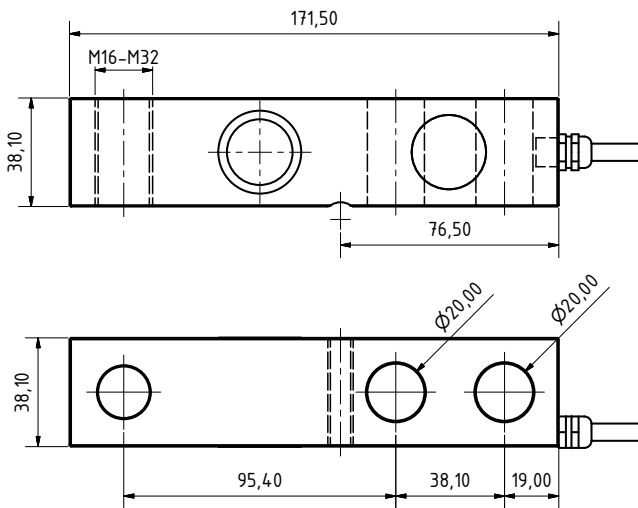
**LOAD CELL TCC-5a**



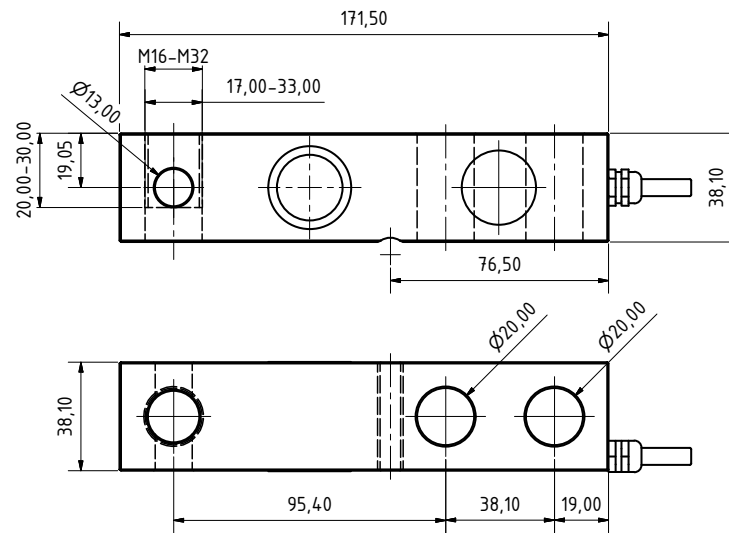
**LOAD CELL TCC-5b**



**LOAD CELL TCC-5c**



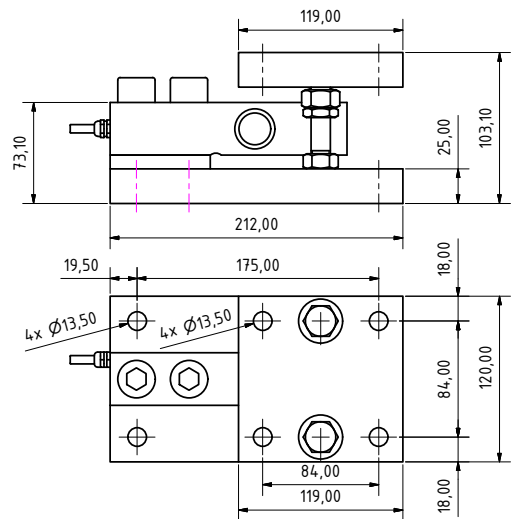
**LOAD CELL TCC-5d**



Reference	Nominal capacities Ln (kg)	Accuracy class n. OIML	y = e <sub>max</sub> / v <sub>min</sub>	#Code TCC-5	#Code TCC-5a	#Code TCC-5b	#Code TCC-5c	#Code TCC-5d
TCC-5/3000	3000	C3	10000	710191	710187	710188	710189	710190
TCC-5/5000	5000	C3	10000	710196	710192	710193	710194	710195
TCC-5/7500	7500	C3	10000	710201	710197	710198	710199	710200

# TCC-5

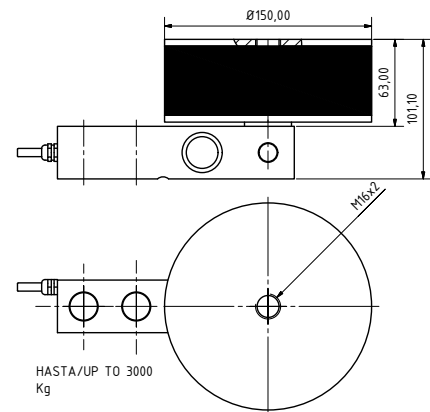
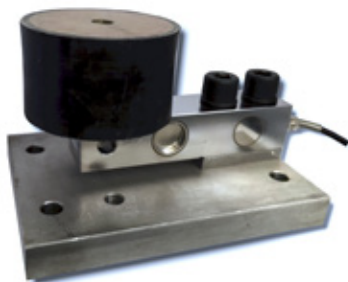
## ACCESSORIES



Dimensions en (mm)

### SILOS ACCESSORY LIFT OFF PROTECTION

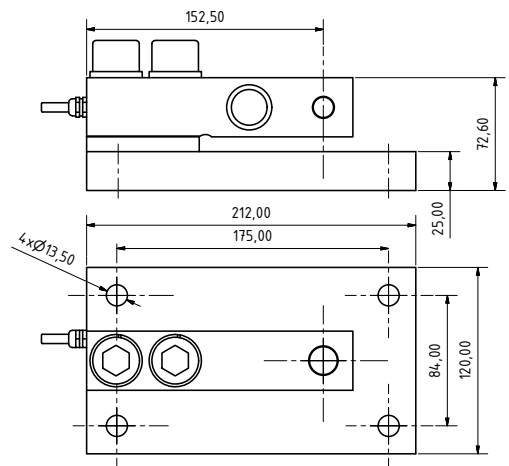
Ref.	Description	#Code
AVTCC-5	Mounting kit for silos. Lift off protection. Zinc Plated Steel	510056
AVTCC-5i	Mounting kit for silos. Lift off protection Stainless steel	510038



Dimensions en (mm)

### SILENT-BLOCK

Ref.	Description	#Code
STCC-5	Silent block zinc plated steel	510068



Dimensions (mm)

### BASE PLATE

Ref.	Description	#Code
BTCC-5	Base plate. Zinc plated steel	510069
BTCC-5i	Base plate. Stainless steel	510095



# **SOLUTIONS FOR THE INDUSTRY**





# GS-1Ai

## 15 » 1500kg CAPACITY

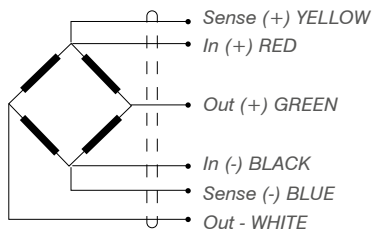
BENDING BEAM LOAD CELL


### APPLICATIONS

Hybrid scales.  
 Fully electronic scales.  
 Silos – Hopper weighing – Tanks.  
 Platforms 4 load cells.  
 Industrial environments.

### FEATURES

Bending beam load cell/shear beam.  
 4000 divisions OIML R60 Class C.  
 Fully stainless steel construction.  
 Hermetically sealed by laser welding.  
 Protected against humidity IP68 (EN60529).

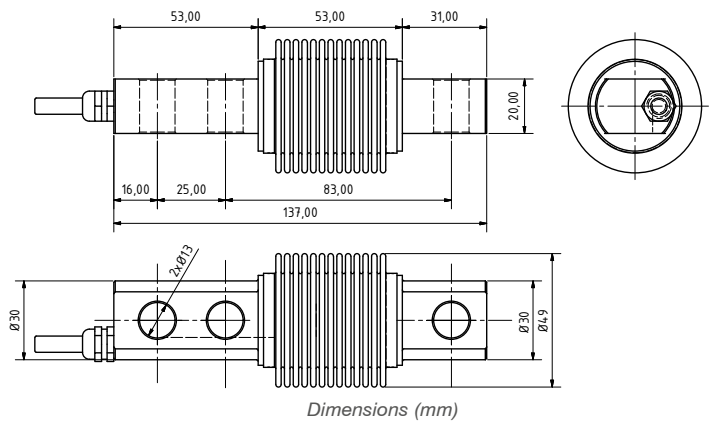








 3000d OIML Certificate No.R60/1991-GB-96.03  
 E-15.02.C01



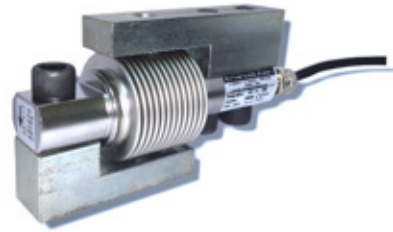
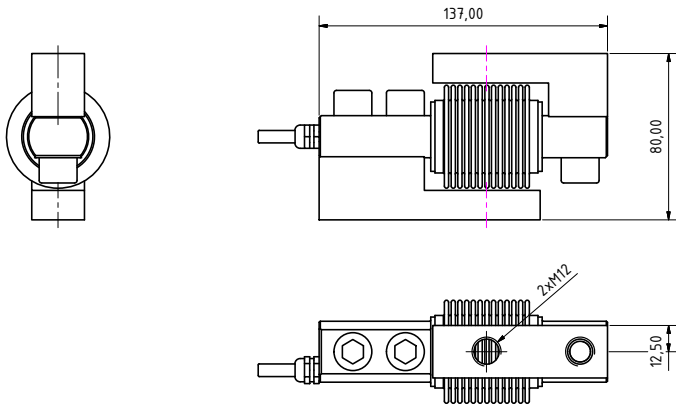
### SPECIFICATIONS

	15-30-50-75-100-150-200-300-500-750-1000-1500 kg
Nominal capacities (LN)	1500 kg
Accuracy class	4000 n. OIML
Minimum dead load	0 %Ln
Service load	150 %Ln
Safe load limit	200 %Ln
Maximum combined error	< ±0.017 %Sn
Repeatability error	< ±0.015 %Sn
Temperature effect: On zero on sensitivity	< ±0.01 %Sn/5°C < ±0.006 %Sn/5°C
Creep error	< ±0.016 %Sn
Temperature compensation	-10..40 °C
Temperature limits	-20..50 °C
Nominal sensitivity	2±0.1% mV/V (2)
Nominal input voltage	10 V
Maximum input voltage	15 V
Input impedance	386Ω±2%
Output impedance	350±3Ω
No load output (SN)	< ±2 %Sn
Insulation resistance	> 5000
Maximum deflection	0.2-0.4
Cable length	5 m



References	Nominal capacities - Ln (kg)	Accuracy class n. OIML	y = emax / vmin	#Code
GS-1Ai/15	 15	C4	10000	710066
GS-1Ai/30	 30	C4	10000	710067
GS-1Ai/50	50	C4	10000	710068
GS-1Ai/75	75	C4	10000	710069
GS-1Ai/100	100	C4	10000	710070
GS-1Ai/150	150	C4	10000	710071
GS-1Ai/200	200	C4	10000	710072
GS-1Ai/250	250	C4	10000	710073
GS-1Ai/300	300	C3	10000	710074
GS-1Ai/500	 500	C4	10000	710075
GS-1Ai/750	 750	C4	10000	710077
GS-1Ai/1000	 1000	C4	10000	710078
GS-1Ai/1500	 1500	C4	10000	710079



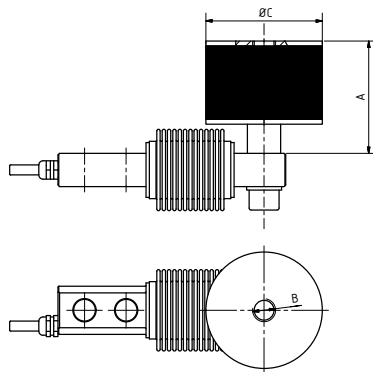


*Dimensions (mm)*

	A	B	C	D	E
M-12	80	137	79.5	25	
M-16	80	137	79.5	25	

### TENSION ACCESSORY

Ref.	Description	Nominal capacities (kg)	#Code
PGS-1A12	Tension accessory M12	15-300	510048
PGS-1A M16	Tension accessory M16	500-1500	-



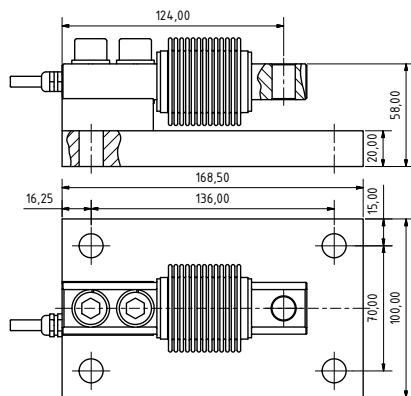
*Dimensions (mm)*

Capacity up to (kg)	A	B	C
300	68	M12	70
500	63	M12	75
1000	58	M16	100



### SILENT-BLOCK

Ref.	Description	#Code
SGS-1A	Silent Block	510072



*Dimensions (mm)*



### BASE PLATE

Ref.	Description	#Code
BGS-1A	Base plate. Zinc plated steel	510070
BGS-1Ai	Base plate. Stainless steel	510096



# GS-2i

## 10 » 300kg CAPACITY

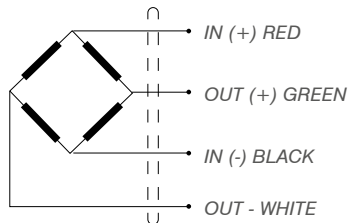
BENDING BEAM LOAD CELL

### APPLICATIONS

Hybrid scales.  
 Fully electronic scales.  
 Silos – Hopper weighing – Tanks.  
 Platforms 4 load cells.  
 Industrial environments.

### FEATURES

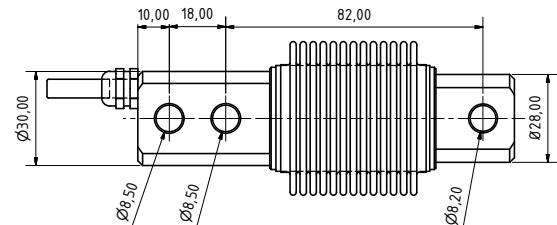
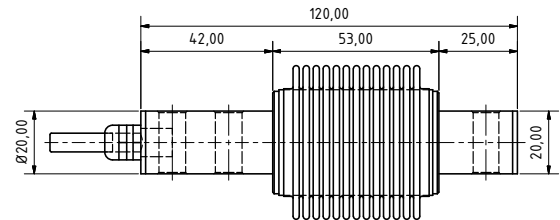
Bending beam load cell.  
 Fully stainless steel construction.  
 4000 divisions OIML R60 Class C.  
 Hermetically sealed by laser welding.  
 Protected against humidity IP68 (EN60529).



**CE** 3000d OIML Certificate No. TC: E-15.02.C01

**M** **68** **CE** **OIML** **C4**  
**SPECIFICATIONS**

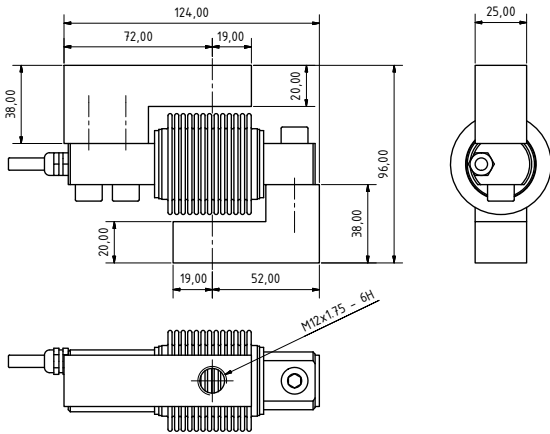
Nominal capacities (LN)	10-15-30-50-75-100-150-200-300 kg
Accuracy class	4000 n. OIML
Minimum dead load	0 %Ln
Service load	150 %Ln
Safe load limit	200 %Ln
Maximum combined error	< ±0.013 %Sn
Repeatability error	< ±0.01 %Sn
Temperature effect:	< ±0.01 %Sn/5°C
On zero on sensitivity	< ±0.006 %Sn/5°C
Creep error	< ±0.012 %Sn
Temperature compensation	-10..40 °C
Temperature limits	-20..50 °C
Nominal sensitivity	2±0.1% mV/V (2)
Nominal input voltage	10 V
Maximum input voltage	15 V
Input impedance	386Ω±2%
Output impedance	350±3Ω
No load output (SN)	< ±2 %Sn
Insulation resistance	> 5000 MΩ
Maximum deflection	0.2-0.4 mm
Cable length	5 m



Dimensions (mm)

Reference	Nominal capacities - Ln (kg)	Accuracy class n. OIML	y = emax / vmin	#Code
GS-2i/10	10	C4	10000	710080
GS-2i/15	15	C4	10000	710081
GS-2i/30	30	C4	10000	710082
GS-2i/50	50	C4	10000	710083
GS-2i/75	75	C4	10000	710084
GS-2i/100	100	C4	10000	710085
GS-2i/150	150	C4	10000	710086
GS-2i/200	200	C4	10000	710087
GS-2i/250	250	C4	10000	710088
GS-2i/300	300	C4	10000	710089



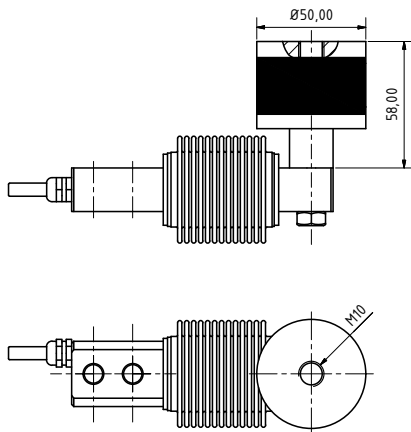


Dimensions (mm)

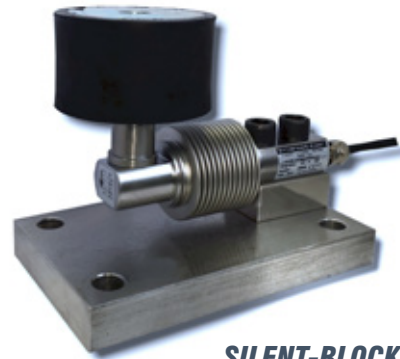


**TENSION ACCESSORY**

Ref.	Description	Nominal capacities (kg)	#Code
PGS-2A M12	Accessory for traction M12	15-300	510071
RTSCM-12	Rod end bearing M12		510060

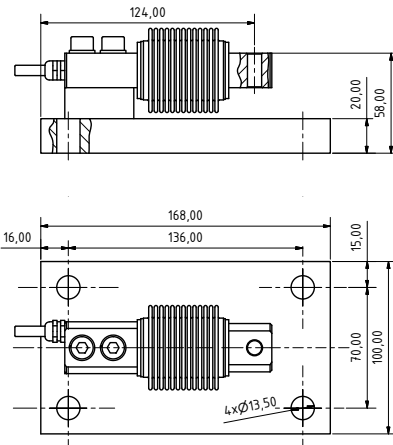


Dimensions (mm)

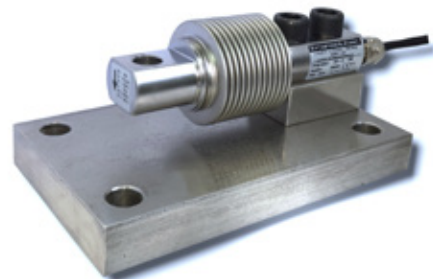


**SILENT-BLOCK**

Ref.	Description	#Code
SGS-2I	Silent Block	510073



Dimensions (mm)



**BASE PLATE**

Ref.	Description	#Code
BGS-2	Base plate. Zinc plated steel	510097
BGS-2i	Base plate stainless. Stainless steel	510093



# TSC-1

## 30 » 2500 kg

CAPACITY

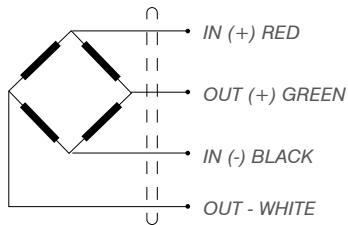
### TENSION LOAD CELL

#### APPLICATIONS

Silos - Tanks.  
 Hopper weighing - Crane Scales.

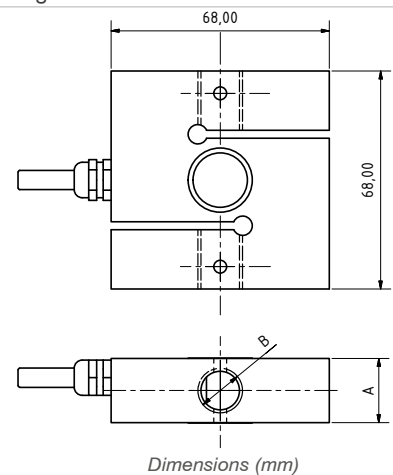
#### FEATURES

Tension load cell.  
 3000 divisions OIML R60 Class C.  
 Hermetically sealed by laser welding.  
 Fully stainless steel construction.  
 Protected against humidity IP68 (EN60529).



Dimensions (mm)

C.N. (kg)	30	50	100	150	300	500	750	1000	1500	2000	2500
A	12.5	12.5	12.5	12.5	20	20	25	25	25	25	25
B	M6	M6	M8	M8	M12	M12	M16	M16	M16	M16	M16



#### SPECIFICATIONS

Nominal capacities (Ln)	30-50-100-150-300-500-750-1000-1500-2000-2500 kg
Accuracy class	3000 n. OIML
Minimum dead load	0 %Ln
Service load	150 %Ln
Safe load limit	200 %Ln
Maximum combined error	< ±0.017 %Sn (1) (3)
Repeatability error	< ±0.015 %Sn
Temperature effect: On zero on sensitivity	< ±0.01 %Sn/5°C < ±0.006 %Sn/5°C
Creep error (30 minutes)	< ±0.016 %Sn
Temperature compensation	-10 - +40 °C
Temperature limits	-20 - +50 °C
Nominal sensitivity (Sn)	2±0.1% mV/V (2)
Nominal input voltage	10 V
Maximum input voltage	15 V
Input impedance	386Ω±2%
Output impedance	350±3Ω
No load output	< ±2 %Sn
Insulation resistance	> 5000 MΩ
Maximum deflection	0.2-0.4 mm
Cable length	5 m

Reference	Nominal capacities Ln (kg)	Accuracy class n. OIML	y = emax / vmin	#Code
TSC-1/30	30	C3	7500	710247
TSC-1/50	50	C3	7500	710248
TSC-1/100	100	C3	7500	710249
TSC-1/150	150	C3	7500	710250
TSC-1/300	300	C3	7500	710251
TSC-1/500	500	C3	7500	710252
TSC-1/750	750	C3	7500	710253
TSC-1/1000	1000	C3	7500	710254
TSC-1/1500	1500	C3	7500	710255
TSC-1/2000	2000	C3	7500	710256
TSC-1/2500	2500	C3	7500	710257

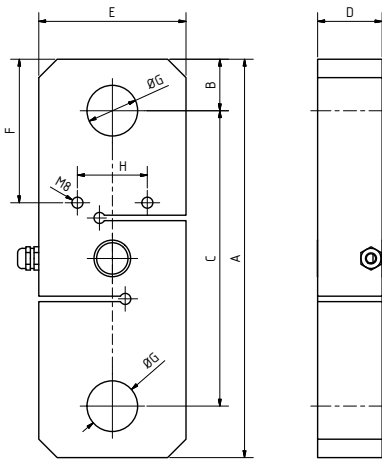
Ref.	Description	#Code
RTSC	Check dimensions on page Rod end accessories	





## SPECIFICATIONS

Nominal capacities (Ln)	3000-6000-10000-15000- 20000-25000-30000
Accuracy class	3000
Input impedance	386Ω±2%
Output impedance	350±3Ω
Input voltage range	5..12 V
Nominal sensitivity	2mV/V
Operating temperature range	-10 a +50°C
Service load	150% (N.L.)
Safe load limit	>400 % (N.L.)
Sensitivity tolerance	+/- 0.1% (N.L.)
Temperature effect on sensitivity (-10...+40°C)	< +/-0.001%/°C
Temperature effect on zero(-10...+50°C)	< +/-0.002%/°C
Maximum combined error	< +/- 0.02 (N.L.)
Creep in 30' at 20°C	+/- 0.02%
Cable length	5 m
Electrical connection	4 wires



Dimensions (mm)

C.N (kg)	A	B	C	D	E	F	ø G	H
3000	229	25.5	178	27	100	77	20	70
6000	264	35	194	35	110	90.5	26	70
10000	281	41	199	42	120	98.5	32	70
15000	361	46	269	60	130	115.5	43	70
20000	389	60	269	68	140	129.5	52	80
25000	400	60	280	68	160	140	52	80
30000	400	60	280	80	160	140	58	80

# TSC-2

## 3000 » 30000 kg

CAPACITY

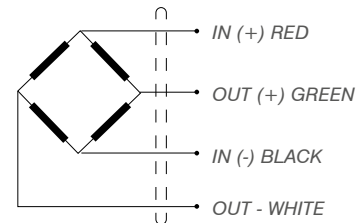
### TENSION LOAD CELL

#### APPLICATIONS

Cranes, Crane Scales, Silos.  
Hopper weighing. Overload protection.

#### FEATURES

Tension load cell.  
3000 divisions OIML R60 Class C.  
Hermetically sealed.  
Fully stainless steel construction.  
Protected against humidity IP67 (EN60529).



Reference	Nominal capacities - Ln (kg)	Accuracy class n. OIML	y= emax/vmin	#Code
TSC-2/3000	3000	3000	7500	710258
TSC-2/6000	6000	3000	7500	710259
TSC2/10000	10000	3000	7500	710260
TSC2/15000	15000	3000	7500	710261
TSC2/20000	20000	3000	7500	710262
TSC2/25000	25000	3000	7500	710263
TSC2/30000	30000	3000	7500	710264



# TSC-5

## 300 » 6300kg

CAPACITY

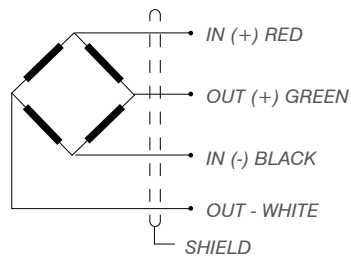
TENSION LOAD CELL

### APPLICATIONS

Cranes, Crane Scales, Silos.  
Hopper weighing. Overload protection.

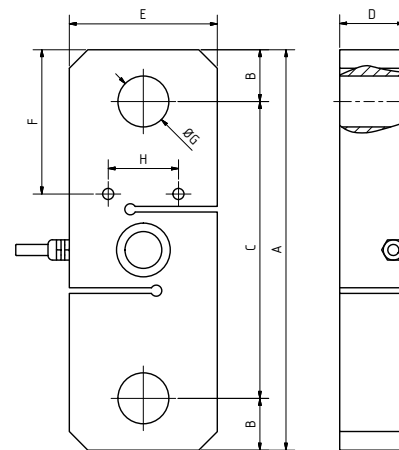
### FEATURES

Tension load cell.  
3000 divisions OIML R60 Class C.  
Hermetically sealed.  
Fully stainless steel construction.  
Protected against humidity IP67 (EN60529).



### SPECIFICATIONS

Nominal capacities	300-500-1000-2000-3200-6300 kg
Accuracy class	3000
Input impedance	386Ω ± 2%
Output impedance	350 ± 3Ω
Input voltage range	5..12 V
Nominal sensitivity	2mV/V
Operating temperature range	-10 a +50°C
Service load	120% (N.L.)
Safe load limit	>300 % (N.L.)
Sensitivity tolerance	+/- 0.1% (N.L.)
Temperature effect on sensitivity (-10...+40°C)	< +/- 0.001%/°C
Temperature effect on zero (-10...+50°C)	< +/- 0.002%/°C
Maximum combined error	< +/- 0.02 (N.L.)
Creep in 30' at 20°C	+/- 0.02%
Cable length	5 m
Electrical connection	4 wires



Dimensions (mm)

C.N. (kg)	A	B	C	D	E	F	ØG	H
300	183	24	135	19	50	61.5	17.5	38
500	183	24	135	19	50	61.5	17.5	38
1000	183	24	135	19	50	61.5	17.5	40
2000	183	24	135	19	60	61.5	17.5	44
3200	194	24	146	28	60	68	21	44
6300	216.5	28	160.5	35	80	78	27.5	44

Reference	Nominal capacities Ln (kg)	Accuracy class n. OIML	y= emax / vmin	# Code
TSC-5/300	300	3000	7500	710265
TSC-5/500	500	3000	7500	710266
TSC-5/1000	1000	3000	7500	710267
TSC-5/2000	2000	3000	7500	710268
TSC-5/3000	3000	3000	7500	710269
TSC-5/3200	3200	3000	7500	710270
TSC-5/6300	6300	3000	7500	710271





**QUALITY &  
MAXIMUM RELIABILITY**

**transdubec**   
load cells



# CTC-1

## 150 » 1000kg

CAPACITY

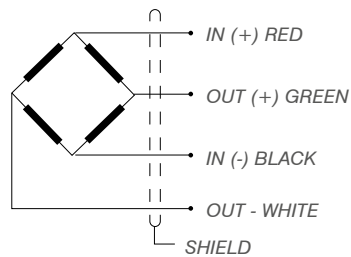
### TENSION LOAD CELL

#### APPLICATIONS

Crane Scales, Silos and hopper weighing.  
 Overload protection.

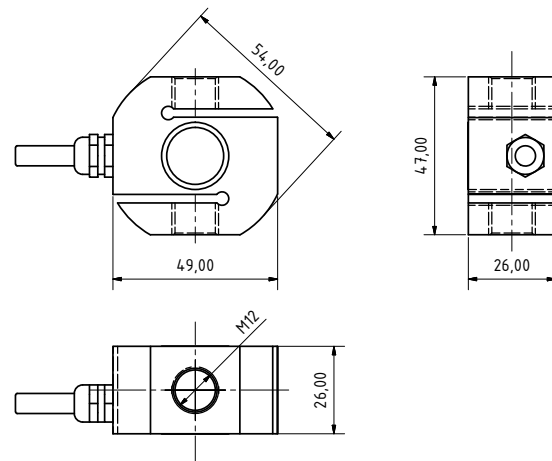
#### FEATURES

Tension load cell.  
 3000 divisions OIML R60 Class C.  
 Hermetically sealed by laser welding.  
 Fully stainless steel construction.  
 Protected against humidity IP68 (EN60529).



#### SPECIFICATIONS

Nominal capacities	<b>150-300-500-750-1000 kg</b>
Accuracy class	<b>3000</b>
Input impedance	<b>386Ω±2%</b>
Output impedance	<b>350±3Ω</b>
Input voltage range	<b>5..12 V</b>
Nominal sensitivity	<b>2mV/V</b>
Operating temperature range	<b>-10 a +50°C</b>
Service load	<b>150% (N.L.)</b>
Safe load limit	<b>&gt; 200 % (N.L.)</b>
Sensitivity tolerance	<b>+/- 0.1% (N.L.)</b>
Temperature effect on sensitivity (-10...+40°C)	<b>&lt; +/-0.001%/°C</b>
Temperature effect on zero (-10...+50°C)	<b>&lt; +/-0.001%/°C</b>
Maximum combined error:	<b>&lt; +/- 0.02 (N.L.)</b>
Creep in 30' at 20°C	<b>+/- 0.02%</b>
Cable length	<b>5 m</b>
Electrical connection	<b>4 wires</b>



Dimensions (mm)

Reference	Nominal capacities - Ln (kg)	Accuracy class n. OIML	y = emax / vmin	# Code
CTC-1/150	150	3000	7500	710054
CTC-1/300	300	3000	7500	710055
CTC-1/500	500	3000	7500	710056
CTC-1/750	750	3000	7500	710057
CTC-1/1000	1000	3000	7500	710058

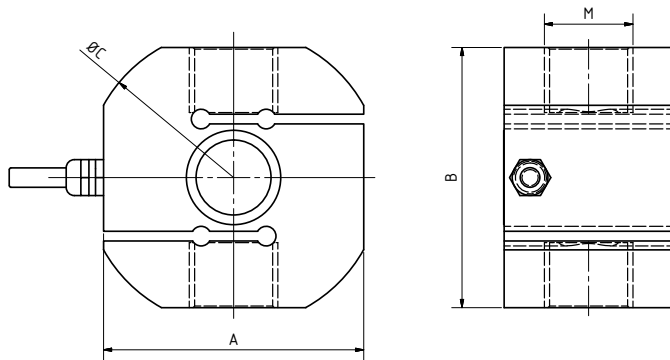
Ref. Accessories	Description	#Code
RTSCM	Rod end bearing	





### SPECIFICATIONS

Nominal capacities (Ln)	750-1000-1500-2000-2500-3000-5000 kg
Accuracy class	3000 n. OIML
Minimum dead load	0 %Ln
Service load	150 %Ln
Safe load limit	200 %Ln
Error combinado	< ±0.017 %Sn
Repeatability error	< ±0.015 %Sn
Temperature effect:	< ±0.01 %Sn/5°C
On zero on sensitivity	< ±0.006 %Sn/5°C
Creep error (30 minutes)	< ±0.016 %Sn
Temperature compensation	-10..40 °C
Temperature limits	-20..50 °C
Nominal sensitivity (Sn)	2±0.1% mV/V (2)
Nominal input voltage	10 V
Maximum input voltage	15 V
Input impedance	386Ω±2%
Output impedance	350±3Ω
No load output	< ±2 %Sn
Insulation resistance	> 5000 MΩ
Maximum deflection	0.2-0.4 mm
Cable length	5 m



Dimensions (mm)

C.N. (kg)	A	B	C	D	M
750...1500	80	80	91,5	25	M16
2000...5000	94	94	105	42	M22

# CTC-2

250 » 5000kg  
CAPACITY

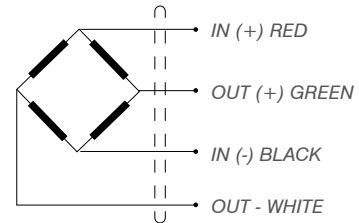
### TENSION LOAD CELL

#### APPLICATIONS

Cranes, Crane Scales, Silos.  
Hopper weighing. Overload protection.

#### FEATURES

Tension load cell.  
3000 divisions OIML R60 Class C.  
Hermetically sealed by laser welding.  
Fully stainless steel construction.  
Protected against humidity IP68 (EN60529).



Reference	Capacity nominal - Ln (Kg)	Accuracy class n. OIML	y = emax / vmin	# Code
CTC-2i/750	750	C3	7500	710059
CTC-2i/1000	1000	C3	7500	710060
CTC-2i/1500	1500	C3	7500	710061
CTC-2i/2000	2000	C3	7500	710062
CTC-2i/2500	2500	C3	7500	710063
CTC-2i/3000	3000	C3	7500	710064
CTC-2i/5000	5000	C3	7500	710065

Ref. Accessories	Description	#Code
RTSCM	Rod end bearing	página 58





# CP-1

## 3000 » 15000kg

CAPACITY

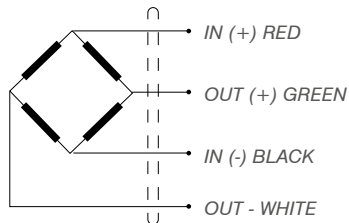
COMPRESSION LOAD CELL

### APPLICATIONS

Tanks, silos and vehicles.  
 Low profile.

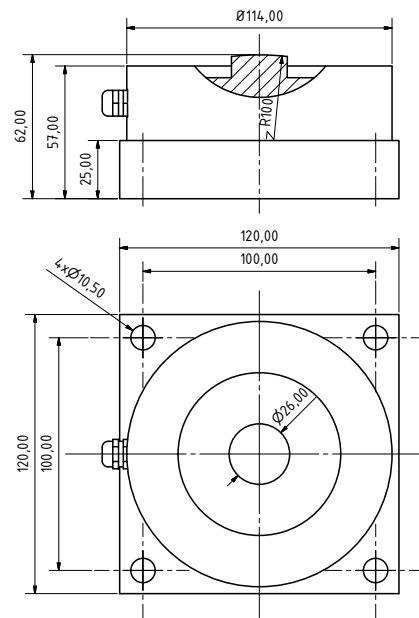
### FEATURES

Compression load cell.  
 3000 divisions OIML R60 Class C.  
 Hermetically sealed.  
 Fully stainless steel construction.  
 Protected against humidity IP68 (EN60529).



### SPECIFICATIONS

Nominal capacities	3000 - 5000 - 10000 - 15000 Kg
Accuracy class	3000
Input impedance	766Ω±2%
Output impedance	700±3Ω
Input voltage range	5..12 V
Nominal sensitivity	2mV/V
Operating temperature range	-10 a +50°C
Sensitivity tolerance	+/- 0.1% (N.L.)
Temperature effect on sensitivity	(-10...+40°C): < +/-0.001%/°C
Service load	150% (N.L.)
Temperature effect on zero	(-10...+50°C): < +/-0.002%/°C
Safe load limit	> 200 % (N.L.)
Maximum combined error	< +/- 0.02 (N.L.)
Cable length	5 m
Creep en	30' a 20°C: +/- 0.02%



Dimensions (mm)

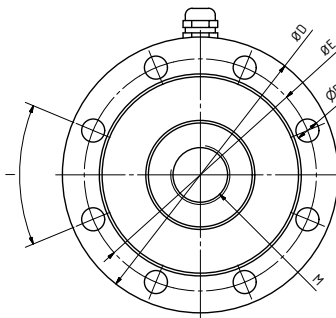
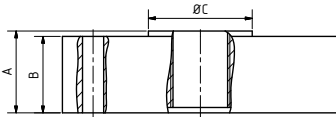
Reference	Nominal capacities - Ln (kg)	Accuracy class n. OIML	y = emax / vmin	#Code
CP-1i/3000	3000	3000	6000	710001
CP-1i/5000	5000	3000	6000	710002
CP-1i/10000	10000	3000	6000	710003
CP-1i/15000	15000	3000	6000	710004





**SPECIFICATIONS**

Nominal capacities	500-1000-2000-2500-5000-7500-10000-12000-20000-25000-30000 kg
Accuracy class	1000/2000
Input impedance	766Ω±2%
Output impedance	700±3Ω
Input voltage range	5..12 V
Nominal sensitivity	2mV/V
Operating temperature range	-10 a +50°C
Service load	150% (N.L.)
Safe load limit	> 200 % (N.L.)
Sensitivity tolerance	+/- 0.1% (N.L.)
Temperature effect on sensitivity (-10...+40°C)	< +/-0.001%/°C
Temperature effect on zero (-10...+50°C)	< +/-0.002%/°C
Maximum combined error	< +/- 0.02 (N.L.)
Creep in 30' at 20°C	+/- 0.02%
Cable length	5 m
Electrical connection	4 wires



Dimensions (mm)

C.N. (t)	A	B	D	E	I	M	P
0,5-7,5 t	30	28	101	85	45°C	M20 x 1,5	8 holes 8,5
10-30 t	40	39	150	125	30°C	M30 x 1,5	12 holes 10,5

# CP-2

500 » 30000kg  
CAPACITY

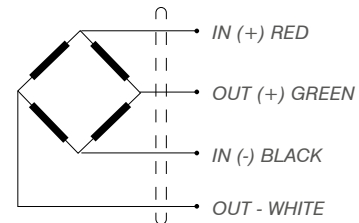
COMPRESSION LOAD CELL

**APPLICATIONS**

Test benches.  
Verification presses.

**FEATURES**

Compression load cell.  
Hermetically sealed.  
Fully stainless steel construction.  
Protected against humidity IP68 (EN60529).



Reference	Nominal capacities - Ln (kg)	Accuracy class n. OIML	y = emax / vmin	#Code
CP-2/500	500	C1 / C2	7500	710021
CP-2/1000	1000	C1 / C2	7500	710022
CP-2/2000	2000	C1 / C2	7500	710023
CP-2/2500	2500	C1 / C2	7500	710025
CP-2/5000	5000	C1 / C2	7500	710026
CP-2/7500	7500	C1 / C2	7500	710027
CP-2/10000	10000	C1 / C2	7500	710028
CP-2/12000	12000	C1 / C2	7500	710029
CP-2/20000	20000	C1 / C2	7500	710024
CP-2/25000	25000	C1 / C2	7500	710030
CP-2/30000	30000	C1 / C2	7500	710031





# CP-3

## 5000kg » 50t

CAPACITY

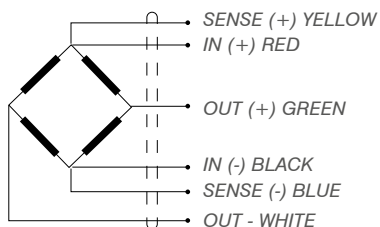
COMPRESSION LOAD CELL

### APPLICATIONS

Weighbridges, Tanks, Silos y Low profile.

### FEATURES

Compression load cell.  
 Doble shear beam load cell.  
 3000 divisions OIML R60 Class C.  
 Hermetically sealed by laser welding.  
 Fully stainless steel construction.  
 Protected against atmospheric discharges with surge arresters.  
 Protected against humidity IP68 (EN60529).

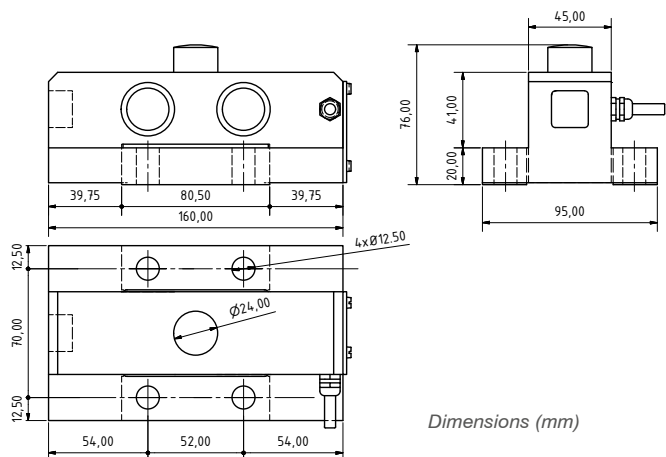


**CE** 3000d OIML Certificate No.R60/1991-ES-98.01



### SPECIFICATIONS

Nominal capacities (LN)	5000-10000-15000-20000-25000-30000-35000-50000 kg
Accuracy class	3000 n. OIML
Minimum dead load	0 %Ln
Service load	150 %Ln
Safe load limit	200 %Ln
Maximum combined error	< ±0.017 %Sn
Repeatability error	< ±0.015 %Sn
Temperature effect:	< ±0.01 %Sn/5°C
On zero on sensitivity	< ±0.006 %Sn/5°C
Creep error	< ±0.016 %Sn
Temperature compensation	-10..40 °C
Temperature limits	-20..50 °C
Nominal sensitivity	2±0.1% mV/V (2)
Nominal input voltage	10 V
Maximum input voltage	15 V
Input impedance	766Ω±2%
Output impedance	700±3Ω
No load output (SN)	< ±2 %Sn
Insulation resistance	> 5000 MΩ
Maximum deflection	0.2-0.4 mm
Cable length	5 m

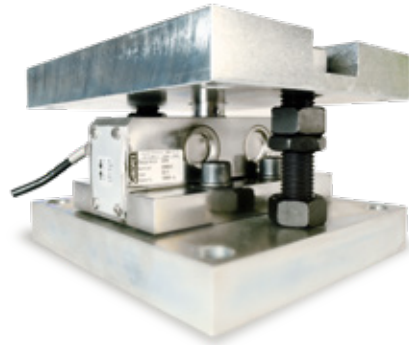
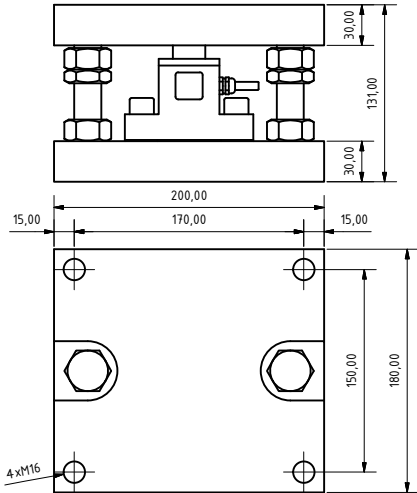


REF. Load cells		Nominal capacities - Ln (t)	Accuracy class n. OIML	y = emax / vmin	#Code
CP-3/5000	<b>M</b>	5	C3	8571	710032
CP-3/10000	<b>M</b>	10	C3	8571	710033
CP-3/15000	<b>M</b>	15	C3	8571	710034
CP-3/20000		20	C3	8571	710035
CP-3/25000		25	C3	8571	710036
CP-3/30000		30	C3	8571	710037
CP-3/35000	<b>M</b>	35	C3	8571	710038
CP-3/50000	<b>M</b>	50	C3	8571	710039



# CP-3

## ACCESSORIES



### SILO MOUNT ACCESSORY

Ref.	Description	#Code
AVCP-3	Mounting kit for silos. Lift off protection CP-3 Zinc plated steel	510076
AVCP-3i	Mounting kit for silos. Lift off protection CP-3 Stainless steel	510098



# CP-8

## 18 t » 50 t

CAPACITY

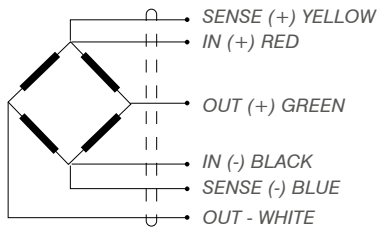
COMPRESSION LOAD CELL

### APPLICATIONS

High capacity weighbridges.

### FEATURES

- Compression load cell.
- Self-centering load cell.
- Fully stainless steel construction.
- 4000 divisions OIML R60 Class C.
- Hermetically sealed by laser welding.
- Protected against atmospheric discharges with surge arresters.
- Protected against humidity IP68 (EN60529).

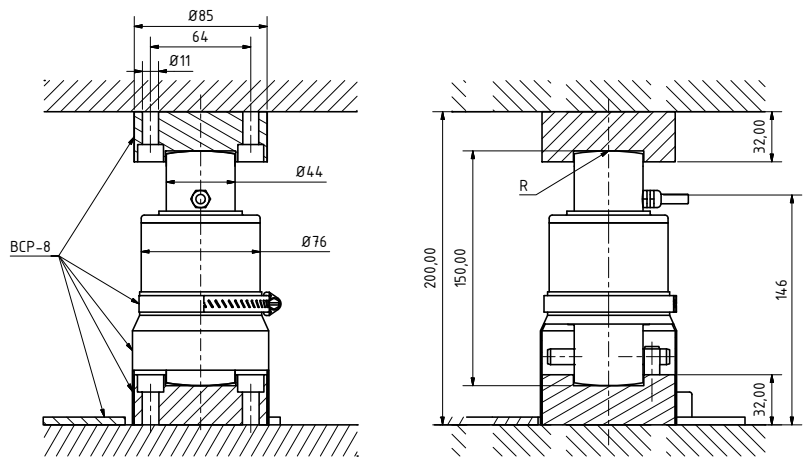



 Test Certificate No.E-08.02.C07



### SPECIFICATIONS

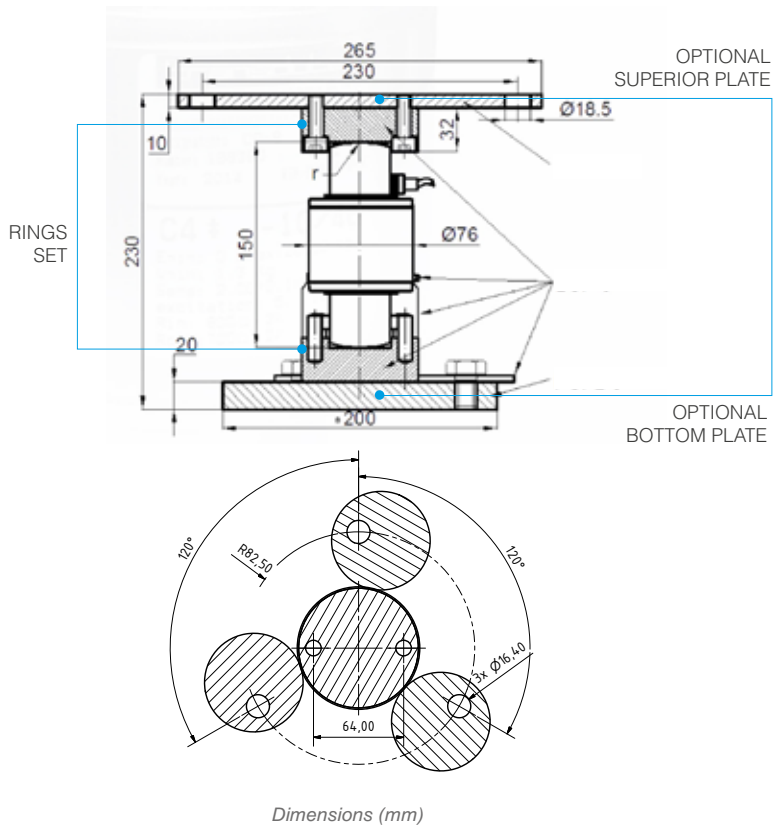
Nominal capacities (Ln)	18-20-25-30-35-40-50 t
Accuracy class	C4 n. OIML
Minimum dead load	0 kg
Service load	120 %Ln
Safe load limit	150 %Ln
Error combinado	<±0.017 %Sn
Repeatability error	<±0.015 %Sn
Creep error (30 minutes)	<±0.016 %Sn
Temperature limits	-30 - +70 °C
Nominal sensitivity (Sn)	2 mV/V ±1%
Nominal input voltage	10 V
Maximum input voltage	15 V
Input impedance	800Ω±2%
Output impedance	700±3Ω
No load output	±2 %Sn
Insulation resistance	> 5000 MΩ
Maximum deflection (at Ln)	0.6 - 1 mm
Cable length	18 m



Dimensions (mm)

Reference	Nominal capacities - Ln (kg)	Accuracy class n. OIML	y = emax / vmin	#Code	WITH ARMoured CABLE	
					Reference	#Code
CP-8/18000	18000	C4	15000	710040	consult	-
CP-8/20000	20000	C4	15000	710042	consult	-
CP-8/25000	25000	C4	15000	710044	consult	-
CP-8/30000	30000	C4	15000	710046	consult	-
CP-8/35000	35000	C4	15000	710048	consult	-
CP-8/40000	40000	C4	15000	710050	consult	-
CP-8/50000	50000	C4	15000	710052	consult	-





# CP-8 ACCESSORIES

## MOUNTING KIT CP-8

Ref.	Description	#Code
	Mounting kit of rings accessory (not included optional plates)	

## SUPERIOR PLATE CP-8

Ref.	Description	#Code
	Superior plate to anchor the rings accessory to a structure (for one load cell)	

## BOTTOM PLATE CP-8

Ref.	Description	#Code
	Bottom plate to anchor the rings accessory to a structure (for one load cell)	

## RINGS SET CP-8 AND BCP-8

Ref.	Description	#Code
BCP-8n	Rings set CP-8 Nickel plated treatment	
BCP-8	Rings set CP-8 stainless steel	





# CP-8CP

## 18 t » 50 t

CAPACITY

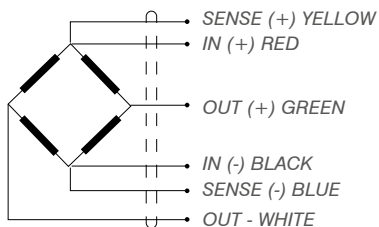
COMPRESSION LOAD CELL

### APPLICATIONS

High capacity weighbridges.

### FEATURES

- Compression load cell.
- Self-centering load cell.
- Fully stainless steel construction.
- 4000 divisions OIML R60 Class C.
- Hermetically sealed by laser welding.
- Protected against atmospheric discharges with surge arresters.
- Protected against humidity IP68 (EN60529).

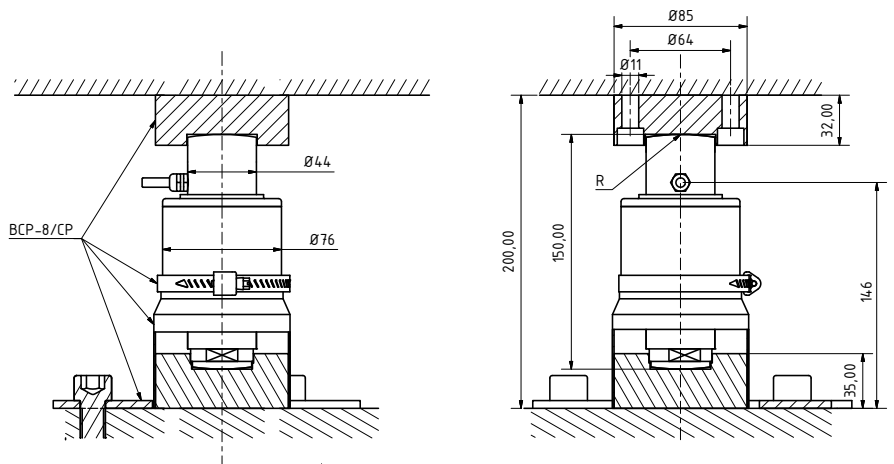


**CE** Test Certificate No.E-08.02.C07

**M** **68** **CE** **OIML** **C4**

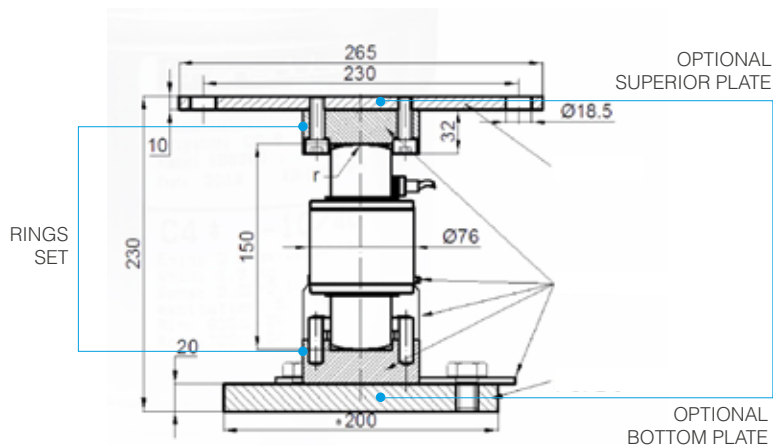
### SPECIFICATIONS

Nominal capacities (Ln)	18-20-25-30-35-40-50 t
Accuracy class	C4 n. OIML
Minimum dead load	0 kg
Service load	120 %Ln
Safe load limit	150 %Ln
Error combinado	<±0.017 %Sn
Repeatability error	<±0.015 %Sn
Creep error (30 minutes)	<±0.016 %Sn
Temperature limits	-30 - +70 °C
Nominal sensitivity (Sn)	2 mV/V ±1%
Nominal input voltage	10 V
Maximum input voltage	15 V
Input impedance	800Ω±2%
Output impedance	700±3Ω
No load output	±2 %Sn
Insulation resistance	> 5000 MΩ
Maximum deflection (at Ln)	0.6 - 1 mm
Cable length	18 m



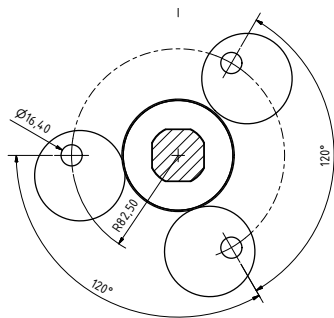
Dimensions (mm)

					WITH ARMoured CABLE	
Reference	Nominal capacities - Ln (kg)	Accuracy class n. OIML	y = emax / vmin	#Code	Reference	#Code
CP-8/18000-CP	18000	C4	15000	710041	consult	-
CP-8/20000-CP	20000	C4	15000	710043	consult	-
CP-8/25000-CP	25000	C4	15000	710045	consult	-
CP-8/30000-CP	30000	C4	15000	710047	consult	-
CP-8/35000-CP	35000	C4	15000	710049	consult	-
CP-8/40000-CP	40000	C4	15000	710051	consult	-
CP-8/50000-CP	50000	C4	15000	710053	consult	-



# CP-8CP

## ACCESSORIES



Dimensions (mm)

### MOUNTING KIT CP-8

Ref.	Description	#Code
BCP-8 CP /CP-4	Number of planar faces 4	
BCP-8 CP /CP-6	Number of planar faces 6	

### SUPERIOR PLATE

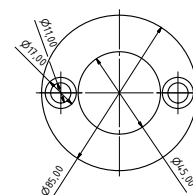
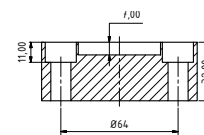
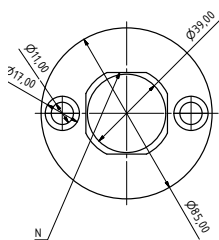
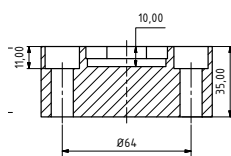
Ref.	Description	#Code
	Superior plate to anchor the rings accessory to an structure (for one load cell)	

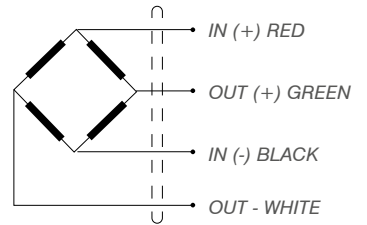
### BOTTOM PLATE

Ref.	Description	#Code
	Bottom plate to anchor the rings accessory to an structure (for one load cell)	

### RINGS SET CP8 AND BCP-8

Ref.	Description	#Code
BCP-8n	Rings set CP-8 Nickel plated treatment	
BCP-8	Rings set CP-8 stainless steel	





### SPECIFICATIONS

Nominal capacities (Ln)	2500-3000-5000-7500-10000-12500-20000-25000-30000 kg
Accuracy class	1000/3000 n. OIML
Minimum dead load	0 %Ln
Service load	150 %Ln
Safe load limit	200 %Ln
Error combinado	< ±0.017 %Sn (1)
Repeatability error	< ±0.015 %Sn
Temperature effect: On zero on sensitivity	< ±0.01 %Sn/5°k < ±0.006 %Sn/5°k
Creep error (30 minutes)	< ±0.016 %Sn
Temperature compensation	-10... 40 °C
Temperature limits	-20... 50 °C
Nominal sensitivity (Sn)	2 ± 0.1% mV/V (2)
Nominal input voltage	10
Maximum input voltage	15
Input impedance	766Ω±2%
Output impedance	700±3%Ω
No load output	< ±2
Insulation resistance	> 5000
Maximum deflection	0.2-0.4
Cable length	8 m

# CP-11

## 2500 » 30000kg

CAPACITY

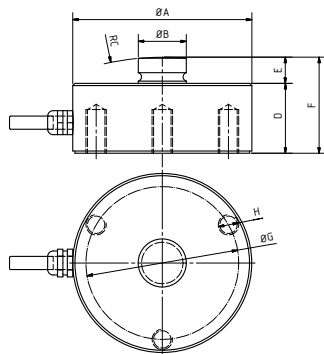
COMPRESSION LOAD CELL

### APPLICATIONS

Silos. Tanks, others

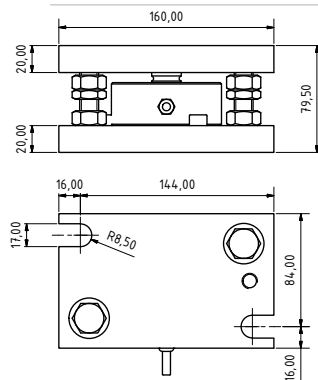
### FEATURES

Compression load cell  
 3000 divisions OIML R60 Class C.  
 Stainless steel construction  
 Hermetically sealed by laser welding  
 Protected against humidity IP68 (EN 60529).



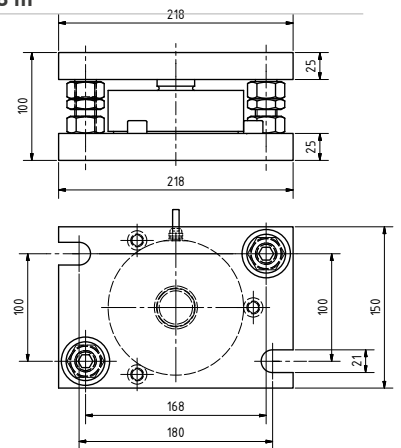
Dimensions (mm)

C.N. (t)	A	B	C	D	E	F	G	H
2.5 a 12.5	82	22	130	32	12	44	70	M8
20 a 30	126	35	200	40	14	54		



Dimensions (mm)

**MOUNTING KIT FOR SILOS. LIFT OFF PROTECTION CP-11**  
 de 2500 kg a 12.500 kg

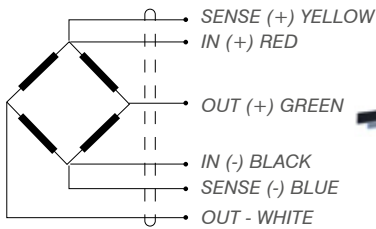


Dimensions (mm)

**MOUNTING KIT FOR SILOS. LIFT OFF PROTECTION CP-11**  
 de 15.000 kg a 30.000 kg

REF. Load cells	Nominal capacities - Ln (kg)	Accuracy class n. OIML	y = emax / vmin	#Code
CP-11/2500	2500	3000	7500	710005
CP-11/3000	3000	3000	7500	710006
CP-11/5000	5000	3000	7500	710007
CP-11/7500	7500	3000	7500	710008
CP-11/10000	10000	3000	7500	710009
CP-11/12500	12500	3000	7500	710010
CP-11/20000	20000	1000	7500	710011
CP-11/25000	25000	1000	7500	710012
CP-11/30000	30000	1000	7500	710013

Ref.	Description	#Code
AVCP-11	Mounting kit for silos. Lift off protection CP-11 de 2500 kg up to 12.500 kg	510026
AVCP-11	Mounting kit for silos. Lift off protection CP-11 de 15.000 kg up to 30.000 kg	510077



**SPECIFICATIONS**

Nominal capacities (Ln)	75.000-80.000-85.0000 -90.000-100.000-125.000-150.000 kg
Accuracy class	3000
Input impedance	800Ω±2%
Output impedance	700±3%Ω
Input voltage range	5..12 V
Nominal sensitivity	2mV/V
Operating temperature range	-10 a +50°C
Service load	150% (N.L.)
Safe load limit	> 200 % (N.L.)
Sensitivity tolerance	+/- 0.1% (N.L.)
Temperature effect on sensitivity (-10...+40°C)	< +/-0.001%/°C
Temperature effect on zero (-10...+50°C)	< +/-0.002%/°C
Maximum combined error	< +/- 0.02 (N.L.)
Creep in 30' at 20°C	+/- 0.02%
Cable length	18 m
Electrical connection	a 6 wires (sense)

**CP-16**  
75 t » 150 t  
CAPACITY

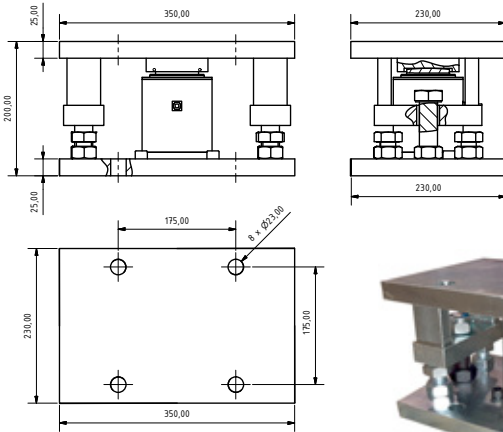
COMPRESSION LOAD CELL

**APPLICATIONS**

Silos, Tanks, others.

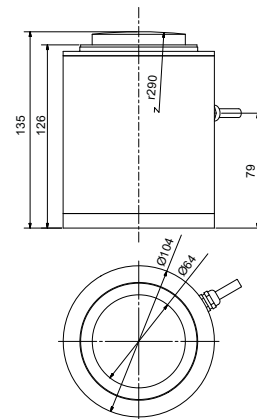
**FEATURES**

- Compression load cell.
- 3000 divisions OIML R60 Class C.
- Stainless steel construction.
- Hermetically sealed by laser welding.
- Protected against humidity IP68.



Dimensions (mm)

**MOUNTING KIT FOR SILOS. LIFT OFF PROTECTION CP-11**

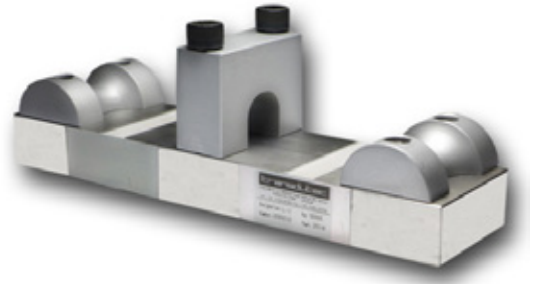


Dimensions (mm)

Reference	Nominal capacities - Ln (kg)	Accuracy class n. OIML	y = emax / vmin	#Code
CP-16/75000	75000	3000	10000	710014
CP-16/80000	80000	3000	10000	710015
CP-16/85000	85000	3000	10000	710016
CP-16/90000	90000	3000	10000	710017
CP-16/100000	100000	3000	10000	710018
CP-16/125000	125000	3000	10000	710019
CP-16/150000	150000	3000	10000	710020

Ref.	Description	#Code
AVCP-16	Mounting kit for silos. Lift off protection AVCP-16	510052





**L(X)**

**500 » 12500 kg**  
CAPACITY

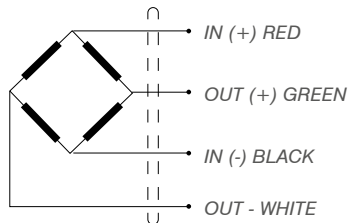
**SPECIALS**

**APPLICATIONS**

Lifts, forklifts.  
Overload protection.

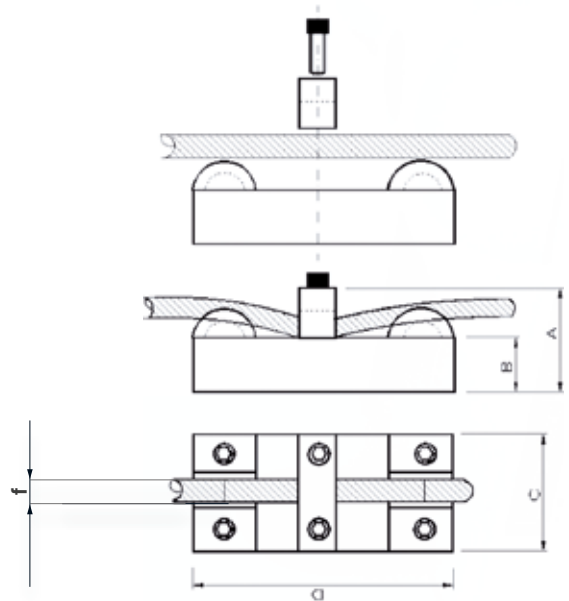
**FEATURES**

Tension measurement load cell.  
Hermetically sealed.  
Stainless steel construction.  
Protected against humidity IP67 (EN60529).



**SPECIFICATIONS**

Nominal capacities (Ln)	500-12.500 kg
Accuracy class	C2 n. OIML
Service load	150 %Ln
Safe load limit	400 %Ln
Maximum combined error	0,02% N.L.
Input voltage range	5.. 15 V
Input impedance	386Ω±2%
Output impedance	350±3Ω
Compensated temperature range	-10.. +40 °C
Nominal sensitivity (Sn)	2 mV/V ±1%
Insulation resistance	> 5.000 MΩ
Cable length	5 m



Dimensions (mm)

Modelo	f (diameter)	A	B	C	D
L2 500 - 5000	4-15	80	25	73	230
L1 3000 - 7500	4-24	70	25	60	230
L0 5000 - 12500	4-35	55	25	40	180

Reference	Nominal capacities - Ln (kg)	Accuracy class n. OIML	y = emax / vmin	#Code
L-0	500-5.000	500	7.500	710090
L-1	3000-7.500	500	7.500	710091
L-2	5000-12.500	500	7.500	710092

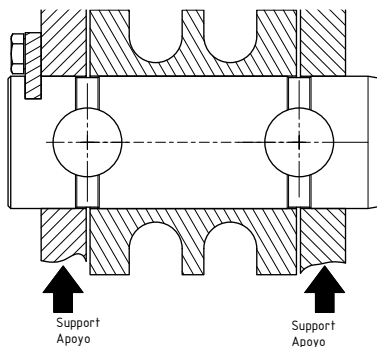
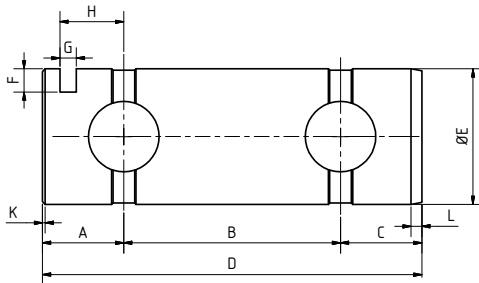




**SPECIFICATIONS**

Nominal capacities (N.L)	xxxxxx kg
Accuracy	0,50%
Input impedance	386Ω±2% ó 766Ω±2%
Output impedance	350±3Ω ó 700±3Ω
Input voltage range	5..12 V
Nominal sensitivity	1mV/V
Operating temperature range	-10 a +50°C
Service load	150% (N.L.)
Safe load limit	>400 % (N.L.)
Sensitivity tolerance	+/- 0.1% (N.L.)
Temperature effect on cero (-10...+40°C)	< +/-0.001%/°C
Temperature effect on cero (-10...+50°C)	< +/-0.002%/°C
Maximum combined error	< +/- 0.02 (N.L.)
Creep in 30' at 20°C	+/- 0.02%
Cable length	xxxxxxx m
Electrical connection a	xxxxxxx

\*xxxxxx= Customer requirements



Dimensions (mm)

**TB  
custom**

**SPECIALS**

**APPLICATIONS**

Overload protection.  
Monitoring of security forces and industry measurement.  
Cranes.  
Tension control on conveyor belts.  
Trucks.

**FEATURES**

Double shear beam load cell.  
Easy to install.  
Economical solution to the problems of weighing and measuring.

**CUSTOM MADE TO THE CUSTOMER REQUIREMENTS:**

- Electrical connector 4-20mA.
- Hermetically sealed up to IP68.
- 4-20mA output integrated in the load cell body.
- 4-20mA output by external plastic ABS enclosure.



**MULTIPLE OPTIONS UNDER DEMAND**





# ***WE CUSTOMIZE TO ADAPT TO SPECIFIC PROJECTS***

Our load cell designs can be integrated into specific projects. We adapt to customer requirements to respond to specific needs, according to applications and usage formats. Project specifications are challenges for Transdudec, it strengthens our collaborative concept and product development. The new challenges are opportunities to respond engineering.



## ***CONTAINERS***

### ***weighing of the container itself***

For application on trailers. Load cells designed in each case according to the recycling bins or trailers and tanks in agricultural machinery as a vehicle weighing element.

## ***DOUBLE***

### ***checking, verification***

Special load cells for application with dual transmission weighing needs. Allows a double verification of data with consequence a more validation of security of the weight.

## ***FORKLIFT***

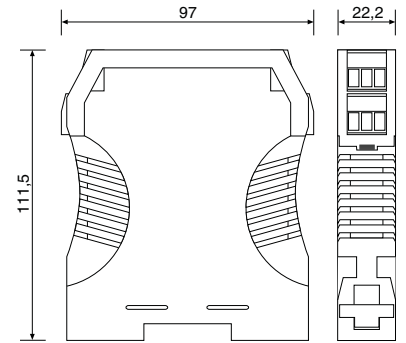
### ***in a differentiated situation***

The challenges of weighing on different kinds of forklift have led us to develop new designs of load cells for their differentiated placement requested by the customer.



# FORCE FLEX

CONVERTER FOR LOAD CELLS



## APPLICATIONS

Dosing and weighing in hopper weighing, silos...  
 Weight and control on conveyor belts.  
 Force control in presses and testing machines.  
 Control of forces in cylinders and pneumatic actuators.  
 Tensión regulation on transfer bands.

## FEATURES

Universal converter for load load cells and Wheastone bridge sensors.  
 You can connect 1 to 4 load load cells.  
 It allows to absorb (subtract) or add with great precision and stability a wide range of tare.  
 It has a filter selectable in 4 levels to stabilize the output signal depending on each application.  
 It is protected by complying with EMC standards for industrial applications.  
 The connection is made using coded plug-in terminals, which facilitate the rapid exchange of modules without rewiring, and protect against mistakes.

## STRUCTURE

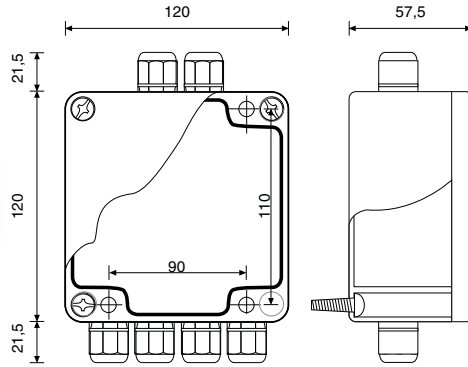
Protection	IP20
Combustibility class	Vo según UL94
Ergonomic box	
Easy rail mount	EN50022
Polyamide material	PA6.6
Connection	Plug-in screw terminals
Terminal error protections	Codes
tightening torque(M3)	0,5Nm
	= < 2,5mm2
Connection cable	12AWG 250V/12A
Weight	140g



## SPECIFICATIONS

INPUT	
Number of load cells	1.. 4 load cells (350/4 Ω)
Sensitivity	0,8mV/V... 3mV/V (selectable by welding)
Input voltage	10V/5V
Maximum input current	120mA
MULTIRANGE	
Selectable, high stability. 3 Steps for the TARE and gain range:	
Sliding Microswitch MODE	2 Positions
THICK Rotating Microswitch	16 Steps
FINE Adjustable multiturn	15 turns
SPAN Minimum field of use of the cell	40% F.e.
ZERO TARE operating range	ADD 100% F.e. REST -57% F.e.
ENVIRONMENTAL	
Operating temperature range	-10/+60°C
Storage temperature	-40/+80°C
Warm-up time	5 minutes
Temperature coefficient	50 ppm/°C
POWER SUPPLY	
Double and automatic	RANGE
115/230VAC (automática) 50/60Hz	100.. 250VAC
24VDC (amplio RANGE)	20.. 30VDC
Consumo máximo	1,8W
PRECISION	
Maximum global error	0,0125% (13bits) 8.000ptos
Thermal drift	Current: 0,3µA/°C Tension: 0,1mV/°C
OUTPUT	
Response time (10 ... 90%) selectable by microswitch in 4 levels	
<b>CURRENT 4/20mA, 0/20mA, 0/5mA, ...</b>	
Capacity of Service load	= <700Ω
Protected against polarity inversion	
Response time	0,02.. 0,5seg
Maximum frequency	10Hz
<b>TENSION 4/20mA, 0/20mA, 0/5mA, ...</b>	
Capacity of Service load	>= 1K
Short circuit protected	
Response time	0,001.. 0,5seg
Maximum frequency	200Hz

Reference	Description	#Code
FORCE FLEX	Amplifier/converter	810001



# QUATTRO CEL

CONVERTER FOR LOAD CELLS



## SPECIFICATIONS

INPUT	
Number of load cells	1-2-3-4 load cells (350 Ω)
Sensitivity	0,8mV/V... 3mV/V (selectable by welding)
Input voltage	10V/5V
Maximum input current	130mA
MULTIRANGE	
Selectable, high stability. 3 Steps for the TARE and gain range:	
Sliding Microswitch MODE	2 Positions
THICK Rotating Microswitch	16 Steps
FINE Adjustable multiturn	15 turns
SPAN Minimum field of use of the cell	40% F.e.
ZERO TARE operating range	ADD 100% F.e. REST -57% F.e.
ENVIRONMENTAL	
Operating temperature range	-10/+60°C
Storage temperature	-40/+80°C
Warm-up time	5 minutes
Temperature coefficient	50 ppm/°C
POWER SUPPLY	
Double and automatic	RANGE
115/230VAC (automatic)	100.. 250VAC/VDC
24VDC (big range)	20.. 30VDC
Maximum consumption	2,2W
PRECISION	
Maximum global error	0,015%
Thermal drift	Current: 0,3µA/°C Tension: 0,1mV/°C
OUTPUT	
<i>Response time (10 ... 90%) selectable by microswitch in 4 levels</i>	
<b>CURRENT 4/20mA, 0/20mA, 0/5mA, ...</b>	
Capacity de Service load	= <700Ω
Protected against polarity inversion	
Response time	0,02.. 0,5seg
Maximum frequency	10Hz
<b>TENSION 0/10V, -10/+10V, 0/5V</b>	
Capacity de Service load	> =1K
Short circuit protected	
Response time	0,001.. 0,5seg
Maximum frequency	200Hz

## APPLICATIONS

Dosing and weighing in hopper weighing, silos...

Weight and control on conveyor belts.

Force control in presses and testing machines.

Control of forces in cylinders and pneumatic actuators.

Tensión regulation on transfer bands.

## FEATURES

Universal converter for load load cells, in field box format, with box up to 4 load cells.

You can connect 1, 2, 3 or 4 load load cells.

It allows to absorb (subtract) or add a wide range of tare with great precision and stability.

It has a filter selectable in 4 levels to stabilize the output signal depending on each application.

It is protected by complying with EMC standards for industrial application.

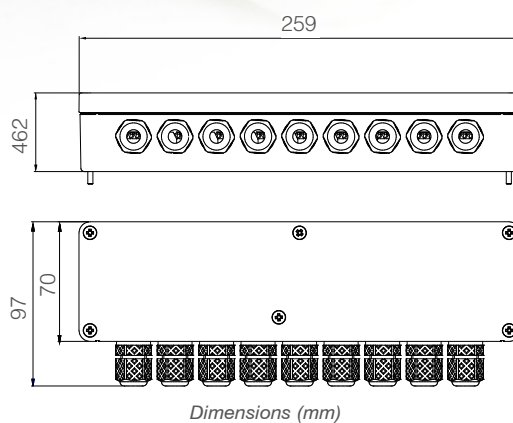
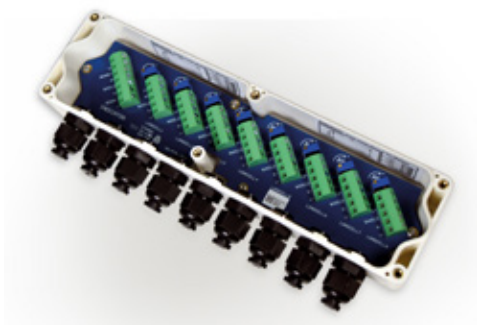
The connection is made using coded plug-in terminals, which facilitate the rapid exchange of modules without rewiring, and protect against mistakes.

## STRUCTURE

Protection	IP65
Material	ABS
Combustibility class	HB/1,6 según UL94
Mounting box	Sobre Pared, 4 agujeros
<i>Mounting holes outside the enclosure no protection decrease, IP protection maintained</i>	
cable gland	PG7 Polyamide
Box dimensions	120x120x57,5mm
Fitting	+21,5mm
Conexión bornas enchufables	= <1,5mm2 16AWG 250V/8A

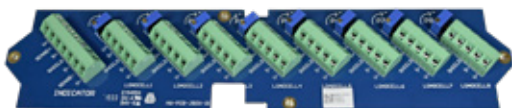


Reference	Description	#Code
QUATTRO	Forceflex with junction box	810002



**JUNCTION BOX** Number of load cells  $\leq 4 - \leq 8$

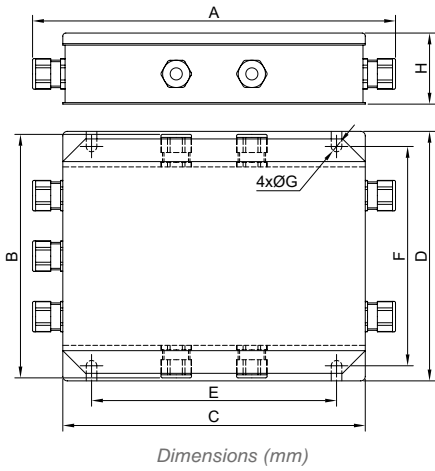
Reference	Description	#Code
GBOX8	Hermetical junction box ABS (8 load cells)	610001



**BOARD AND COMPONENTS WITHOUT BOX** Number of load cells 8

Reference	Description	#Code
-	Junction circuit board up to 8 load cells	510033





Dimensions (mm)



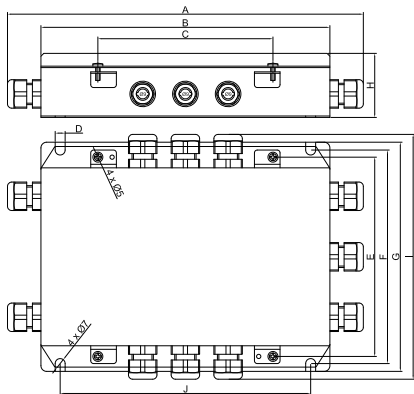
REFERENCE	A	B	C	D	E	ØF	H	MATERIAL
610005	240	165	200	170	162	155	7	stainless steel
610006	175	- - -	132	110	168	35	7	stainless steel

**JUNCTION BOX Number of load cells ≤ 4 - ≤ 8**

Reference	Description	#Code
-	Junction box in stainless steel up to 8 load cells	610005
-	Junction box in stainless steel up to 4 load cells	610006

**BOARD AND COMPONENTS WITHOUT BOX**

Reference	Description	#Code
-	Junction circuit board up to 8 load cells	510094
-	Junction circuit board up to 4 load cells	510095



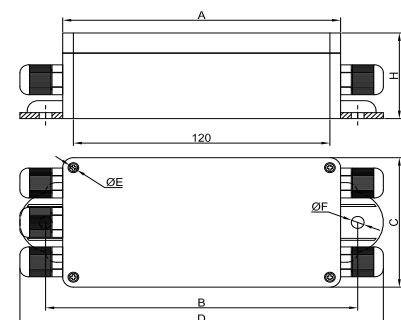
Dimensions (mm)



Reference	A	B	C	D	E	F	G	I	J	H	MATERIAL
	250	200	120	7	140	150	160	170	170	45	stainless steel

**JUNCTION BOX Number of load cells 10**

Reference	Description	#Code
-	Junction box in stainless steel. Up to 10 load cells	610007



Dimensions (mm)

REFERENCE	A	B	C	D	E	ØF	H	MATERIAL
610008	130	146	65	170	3	6,5	43	Plastic



**JUNCTION BOX Number of load cells 4**

Reference	Description	#Code
-	Junction box reduced dimensions in plastic up to 4 load cells. Protection IP66	610008

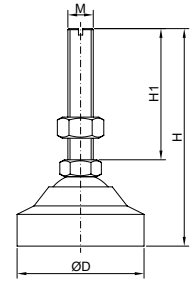




### LOAD FOOT M12-18-20

Self-centering load foot  
with ball.  
Rubber base.

Carga (t)	H	H1	ØD	M
0.5 - 2	90	50	60	M12 x 1.75
2 - 5	105	50	80	M18 x 1.75
2 - 5	130	90	100	M20 x 1.75

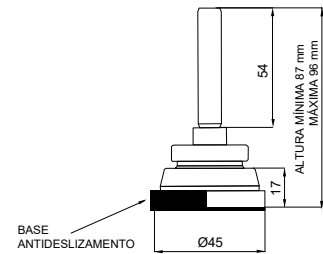


Reference	Metric	Material	Weight transport (kg)	#Code
PPM-12	M12 x 1.75	Nickel plated	0,365	510029
PPM-12i	M12 x 1.75	Stainless steel	0,330	510030
PPM18	M18 x 1.75	Nickel plated	0,910	510031
PPM18i	M20 x 1.75	Stainless steel	1,620	510032



### LOAD FOOT M12

Self-centering load foot with ball.  
Rubber base.



Reference	Metric	Material	Weight transport (kg)	#Code
-	M12 x 1.75	Stainless steel	0,250	510078



### LOAD FOOT M12

Self-centering load feet with  
spherical end.  
Rubber base

Reference	Metric	Material	Weight transport (kg)	#Code
-	M12 x 1.75	Nickel plated	0,245	510079
-	M12 x 1.75	Stainless steel	0,245	510080



### LOAD FOOT M12

Self-centering load feet of  
sliding cylinder.  
Nickel plated.

Reference	Metric	Material	Peso transpote (kg)	#Code
-	M12 x 1.75	Nickel plated	0,370	510081



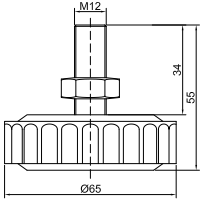
### LOAD FOOT M12

Self centering load foot.  
Nickel plated.  
Rubber base.

Reference	Metric	Material	Weight transport (kg)	#Code
-	M12 x 1.75	Nickel plated	0,265	510082



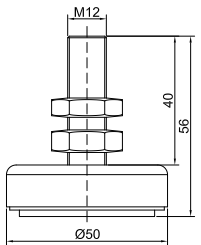




Reference	Metric	Material	Weight transport (kg)	#Code
-	M12	Zinc plated	0,090	510083

### LOAD FOOT M12

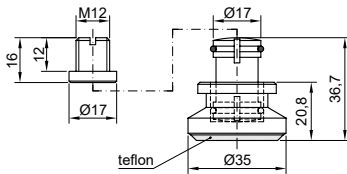
Self-centering load feet  
rigid  
Rubber base



Reference	Metric	Material	Weight transport (kg)	#Code
-	M12	Stainless steel	0,120	510084

### LOAD FOOT M12

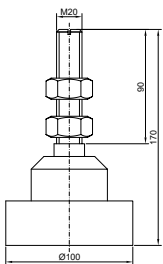
Self-centering load feet  
Stainless steel  
Base in hard plastic.



Reference	Metric	Material	Weight transport (kg)	#Code
-	M20	Nickel plated	0,120	510088

### LOAD FOOT M12

Self-centering load feet of  
sliding cylinder.  
Small height.  
Stainless steel  
Teflon base.  
Includes accessory for  
height adjustment.

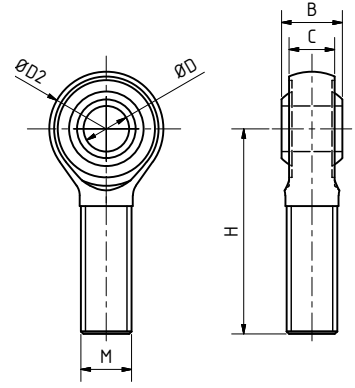


Reference	Metric	Material	Weight transport (kg)	#Code
-	M20	Nickel plated	2,6	510086
-	M20	Stainless steel	2,6	510087

### LOAD FOOT M20

Self-centering load foot  
with ball.  
Up to 10 t





Ref.	D	D2	B	C	H	M
RTSC-M6	6	18	9	6.75	36	M6
RTSC-M8	8	22	12	9	42	M8
RTSC-M12	12	30	16	12	54	M12
RTSC-M16	16	38	21	15	66	M16
RTSC-M20	20	46	25	28	78	M20x1.5
RTSC-M22	22	50	28	20	84	M22x1.5



**ROD END BEARING**  
**M6-8**  
**M12-16**  
**M20-22**

Reference	Metric	#Code
RTSCM-6	M6	510090
RTSCM-8	M8	510089
RTSCM-12	M12	510060
RTSCM-16	M16	510041
RTSCM-20	M20	510075
RTSCM-22	M22	510061



BIG NET W1 W2

AUX kg

0.000

- MODE
- 0
- GROSS NET
- PT
- MR ESC
- PRINT kg
- Power button

## INDICATORS REPEATERS

### MORE FUNCTIONS AND OPTIONS

We have introduced a compact Indicator with extensive functions for all types of industry, distribution, power supply, chemical-pharmaceutical industry.

### VERSATILE

High precision weight indicator. Ideal for applications that require an autonomous Indicator with the possibility of providing communication interfaces to connect to remote weighing display, PC, external PLC or printer, among others.

### PROTECTION & FINISHES

High resistance and uniformity that give greater durability and resistance to the passage of time and temperatures. Three degrees of protection available in two housings to meet the quality standards and indicator protection. Impact resistant material and two types of IP protection to choose according to your needs. Black color housing with stainless steel reversible support for column, wall or table.

### MAIN FUNCTIONS



#### REPEATER FUNCTION

Weight repeater display up to 16 m with output RS232. Optional RS485 up to 1200 m (required in both devices).



#### PIECE COUNTING

This function allows the user to count the pieces which have been loaded on the platform according to the unit average weight PMU which has been scheduled previously. It also allows the counting of the PMU according to the amount of pieces which have been loaded.



#### TOTALISATION

This function allows the user to do the addition of the weights accumulated in the memory and shows the total number of weights.



#### CHECKWEIGHER

The weight indicator GI400 includes the mode checkweigher or pass-not pass. It can manage automatically up to 4 zones using weight limits for each one of them. By selecting the desired weight, the indicator allows the user to choose superior or inferior limits through value or percentage.

### OPTIONAL FUNCTIONS



#### LIMITS

The weight indicator GI400 has been designed to manage automatically a starter weight and 3 limits that activate 4 relays by means of weight registers for each one of them.



#### DOSAGE

The equipment has been designed to dosing automatically one product at two speeds or two products at one speed, with unload. The user can program for each product the value of the coarse weight or product 1, and the value of the weight when it goes at slow speed (which means the value of the fine) or the value of the product 2. The equipment can also program a unloading zone where the user can define the ending of the dosing. When the equipment is switched on it starts to work with the last formulation which has been programmed, so that it is possible from the start to initiate everyday work.





## GI400-i WEIGHT TARE

Weight tare indicator with a memory to up to 6 TLUs (memory of tare) introduced manually.

Tickets can be printed in up to 8 different formats and multiple languages.

Description	Code #
Indicator WEIGHT-TARE GI400 LED ABS IP54	410001
Indicator WEIGHT-TARE GI400 LED ABS IP54 12V	410002
Indicator WEIGHT-TARE GI400 LED ABS IP65	410003
Indicator WEIGHT-TARE GI400i LED INOX IP54	410004
Indicator WEIGHT-TARE GI400i LED INOX IP54 12V	410005
Indicator WEIGHT-TARE GI400i LED INOX IP65	410006
Indicator WEIGHT-TARE GI400i LED INOX IP68	410007



## GI410-i WEIGHT TARE NUMERICAL

Weight tare indicator with a memory to up to 400 item 1, 400 item 2 and 10 prefixed tares.

The introduction of the details of the product can include code, description, tare, EAN code and the characterization of the product is according to its operating platform GI410 indicators allow to generate multiple report lists choosing item1 and/or item 2 and/or date.

Description	Code #
Digital indicator GI410 LED ABS IP54	410008
Digital indicator GI410 LED ABS IP54 12V	410009
Digital indicator GI410 LED ABS IP65	410010
Digital indicator GI410i LED INOX IP54	410011
Digital indicator GI410i LED INOX IP54 12V	410012
Digital indicator GI410i LED INOX IP65	410013
Digital indicator GI410i LED INOX IP68	410014

## GI400-i LCD WEIGHT TARE

Weight tare indicator with a memory to up to 6 plus (memory of tare) introduced manually. Tickets can be printed in up to 8 different formats and multiple languages.



Description	Code #
Indicator WEIGHT-TARE GI400 LCD ABS IP54	410015
Indicator WEIGHT-TARE GI400 LCD ABS IP54 12V	410016
Indicator WEIGHT-TARE GI400 LCD ABS IP65	410017
Indicator WEIGHT-TARE GI400i LCD INOX IP54	410018
Indicator WEIGHT-TARE GI400i LCD INOX IP54 12V	410019
Indicator WEIGHT-TARE GI400i LCD INOX IP65	410020
Indicator WEIGHT-TARE GI400i LCD INOX IP68	410021

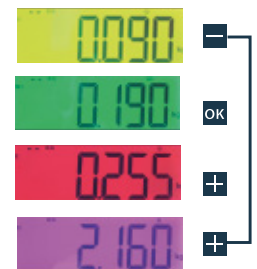
## GI410-i LCD DIGITAL INDICATOR

Weight tare indicator with a memory to up to 400 item 1, 400 item 2 and 10 prefixed tares GI410 indicators allow to generate multiple report lists choosing item 1 and/or item 2 and/or date.

The introduction of the details of the product can include code, description, tare, EAN code and the characterization of the product is according to its operating platform



Set a target and top/bottom margin parameters



With visual value alarm

Description	Code #
Digital indicator GI410 LCD ABS IP54	410022
Digital indicator GI410 LCD ABS IP54 12V	410023
Digital indicator GI410 LCD ABS IP65	410024
Digital indicator GI410 LCD INOX IP54	410025
Digital indicator GI410 LCD INOX IP54 12V	410026
Digital indicator GI410 LCD INOX IP65	410027
Digital indicator GI410 LCD INOX IP68	410028





## GI400-i LCD BAT LI-ION

The same functions tare weight in a device with lithium battery included.

Description	Code #
Indicator GI400 ABS LCD BAT LI-ION IP65	410030
Indicator GI400 INOX LCD BAT LI-ION IP65	410031



## GI410i PRINT LCD

Numerical indicator with counting parts function and weight control.  
Built-in thermal printer

Description	Code #
Stainless steel numerical indicator GI410 PRINT with IP54 protection	410029

### OPCIONALES

Code #	Description	ABS GI400 - 410	Stainless steel GI400-410	batería int. GI400 BAT LI-ION	GI430
510002	Internal battery (3,7 V/5,2 Ah). Lithium-Ion Technology (Indicators ABS)	*			
510001	Internal battery (3,7 V/5,2 Ah). Lithium-Ion Technology (Indicators stainless steel)		*		
510003	OUTPUT RS485	*	*	*	
510004	Additional board 4/20mA		*		
510005	Additional board 4/E 4/S relés		*	*	
510006	Communication board - Ethernet		*	*	Included
-	Communication board - USB	*	*		Included (for keyboard)
510007	Connection board - Wifi	*	*		-
810008	Additional plate ALIBI/DSD Memory	*	*	*	*

*In stainless steel indicators version it is available just 1 of 220003 | 220004 | 220005 except for IP68 protection, in this case could be chosen 2 of them. Internal battery (3,7 V) is incompatible with 220003 | 220004 | 220005 optionals, except for IP68 version which it could be chosen one of them (VAT and cost of transport are not included)..*

# GI430

## truck weighing



### FUNCTIONS

**Tare** - Introduction of manual tare. Weighing with memorized tare.

**Date and time programming**

**Configurable printing list and tickets. Ticket reprint.**

**File codes management.** Management of file codes. It is possible to use a file of 2000 codes. Such file is used for the management of 4 types of codes; for example of customer, material, origin and plate code. It is also possible the programming of a different name for every code.

**Weights management.** It is possible the storage of a max of 4500 weight with acoustic signal to advise that the memory is nearly full (80%).

**Management of memorized tares**

**Management of lorries in transit.** It is possible to manage as many vehicles in traffic as weighing memory are available.

### WEIGHING OPTIONS

First manual weight.

Second manual weight.

Weighing with manual tare.

Single transaction weight.

*Possibility of protection of all metrological configuration functions and data base with password*



## FEATURES

<b>Keyboard</b>	Alphanumerical phone keyboard Keyboard with direct functions
<b>Screen</b>	TFT screen with 320 x 240 pixels RGB
<b>Models</b>	2 designs: bench-top and on wall
<b>Finish</b>	Stainless steel IP54
<b>Dimensions</b>	Bench top: 352(w) x 119(p) x 208(h)max Wall: 385(w) x 170(p) x 226(h)max
<b>Packaging dimensions</b>	418(w) x 300(p) x 146(h)
<b>Packaging weight</b>	3 kg
<b>Languages</b>	Spanish, English, French and Italian
<b>Power supply</b>	Power supply 100-240 V AC, 50/60 Hz

## TECHNICAL SPECIFICATIONS:

Sigma-delta ( $\Sigma\Delta$ ) converter with 24 bits and low noise, up to a max of 1.200 conv/seg.  
 Max. 6.000e Mono range, Multi range or Multi slot (in 3.000, per partial weighing range) in approved version  
 100.000 displayable divisions for internal use.  
 Connection to up to a max. 14 of analogical load cell with an input resistance of 350  $\Omega$   
 Minimum impedance of the load cell: 25  $\Omega$

## REFERENCES GI430 MODEL

Description	Code #
Indicator GI430 alphanumerical TFT INOX	410032
Indicator GI430 alphanumerical TFT INOX with printer	410033
Indicator GI430 alphanumerical TFT INOX wall	410034
Indicator GI430 alphanumerical TFT INOX wall with printer	410035

*With weighbridge firmware included*

## I/O SERIAL PORTS

Description	Code #
USB (for external keyboards)	Included
Ethernet	Included
2 x RS232*	Included

\*2 x RS232 (in printer version one of RS232 ports will be cancelled).

## I/O OPTIONAL

Description	Code #
Communication board - Wifi	-
DSD Memory	810008

## ACCESSORIES

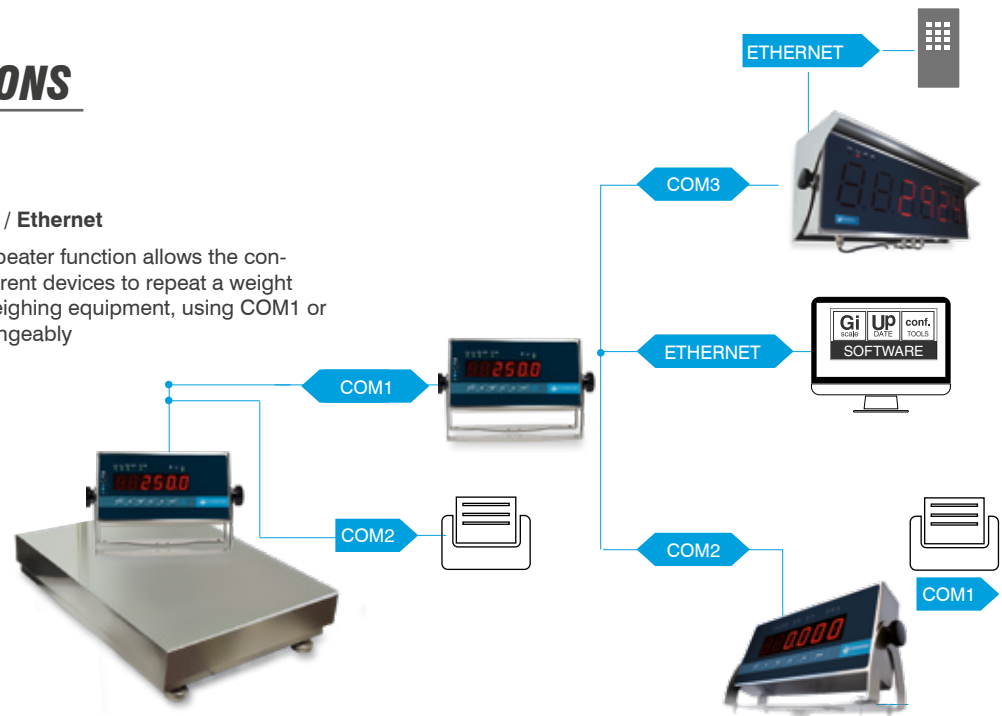
Description	Code #
Ethernet wire 0,5 m	510009
Keyboard USB	510010
RS232 wire to computer 1,5 m (9F-9F / D)	510011
RS232 wire to printer 1,5 m	510012
Interconnection wire with repeater 10 m	510013
Printer LX-350	510014
Printer ORIENT BTP-M300 / IMP 27	510015
Printer POS76 / IMP 28	510016

## MAIN FUNCTIONS

### REPEATER MULTIPLE

COM1 / COM2 / Ethernet

The multiple repeater function allows the connectivity of different devices to repeat a weight emitted by a weighing equipment, using COM1 or COM2 interchangeably



## SUM CHANNELS FUNCTION

W1 / W2 / W3



### SCHEME 1

Sum function allows, at the repeater, the function to sum up to 3 weights via the entries: COM1 | COM2 | COM3 available as standard and it shows the result on display.



### SCHEME 2

If you do not occupy the 3 ports you can display on screen or to process by exit channel. These ports allow the possibility IN /OUT.



## REPEATER OF A SINGLE INDICATOR



(available with GI400 R45)

Using the equipment like a repeater of a single indicator, it allows "0" "T" setting and the tare of an GI400 indicator. Allowing a great agility at workflow.





Dimensions: 257 x 136 x 59 mm

## GI400-i

Main display red LED of 7 segments and more points with 6 digits of 25 mm

\* The GI400 indicator can be used as a repeater via the RS232 output (up to 16 m).

Acquiring the optional RS485 for the main indicator and for the indicator used as the repeater, it is possible to arrive up to a maximum distance of 1200 m.

Description	Code #
Indicator GI400i IP54	410004
OPTIONALS	Code #
Output RS485	510003



Dimensions: 351 x 163 x 68,5 mm

## GI400-R45

Weight repeater with highcontrast led with 6 digits of 45mm.

IP65 Protection.  
Sum channel function.  
Multiprotocol

Entry

COM 1: RS232  
COM 2: RS232  
COM 3: RS485  
(15 m of cable included)

Description	Code #
Repeater with 6 digits of 45 mm	410036



Dimensions: 604 x 236 x 212 mm

## GI400-R100

Weight repeater with red LED of 7 segments with decimal.

6 digits of 100 mm height.  
Ambience light sensor.  
IP65 Protection.  
Sum channel function.  
Multiprotocol

Entry

COM 1: RS232  
COM 2: RS232  
COM 3: RS485  
(15m of cable included)  
\*with internal keyboard for set up

Description	Code #
Repeater with 6 digits of 100 mm	410037
OPTIONALS	Code #
Communication board - Ethernet	510006

---

# Terms of Warranty

---

## RMA

---

## WARRANTY CONDITIONS

Transdutec S.A. guarantees its products, bought through an authorized channel, with reference to manufacturing or material defects during a period of two years from the delivery date, according to the current legislation, except when there is a specific agreement or in the acceptance of the order.

- The guarantee does not include damages produced by the wear of the material due to its use, inappropriate conservation or maintenance, Wrong storage or use, modifications introduced without the consent, on paper, from Transdutec, S.A., And in general due to causes beyond the control of our company, Transdutec, S.A.
- The exceptionality of damage due to a thunderstorm is covered during the two year warranty in the case of load cells. A control will be carried out to determine if it corresponds.
- The guarantee does not include accessories such as battery, adaptor, electrical header.
- The reparations will be made at Transdutec facilities. Dismantling, packaging, transport, customs, fees, etc. are responsibility of the customer and subsequent delivery to the customer. In this case, transports costs will not be accepted.
- Transdutec can agree with the customer the reparation or the replacement of the faulty pieces. In such case, the expenses of the journey of the members of the technical service will be paid by the customer.
- In the event of a malfunction of the product, within the first 45 days since its delivery, it is going to be replaced. The customer must return the material with the original packaging in perfect condition. Transdutec reserves the right to request images and / or videos for evaluation of each case and its approval. Transdutec will take care of the collection and will send the transport agency for collection. Transdutec reserves the right to charge the product and transport in case of checking product manipulations or damage / lack of packaging.
- Transdutec is not going to pay for the reparations done by third parties.
- The repairing or replacement of a faulty piece does not vary the guarantee period of the supplied product. However, the piece that has been repaired or replaced has a guarantee period of two years from the date when the reparation or replacement has been done.
- Transdutec is not responsible, in any case, of indirect damages and/or as a consequence of the supplying.
- The Customer will be responsible of getting rid of the elements supplied by Transdutec, S.A., following the necessary regulation rules, by its own account and responsibility.



## WARRANTY FOR DAMAGES DONE DURING THE TRANSPORT

- Customers who receive the products within the Spanish State, have 24 hours to count from the moment of receipt to notify Transdutec of any anomaly that may be derived from the transport, which they appreciate in the merchandise received. If such communication is not made during this period, Transdutec will not assume any cost of repair or replacement in case the product has been damaged. This period is extended to a maximum of 7 days when the reception is made in any other country of the European Union. This period varies depending on the legislation in other countries.
- We remind you that there is at your disposal a section called “Reservations entry” to specify, when signing the delivery note that the package contains damages such as hits, breaks or others that can affect the product and cannot be seen without opening the package. We strongly recommend you to complete with your observations the delivery note from the deliverer before signing it. All the members of our staff have an EC Certify and the user’s guide for our customers.
- Remember that as manufacturers Transdutec, s.a. does not include transportation damage in the guarantee, so if they do not specify it in the “Reservation Annotation” it can not be claimed from the carrier.

---

# Advertising and informative Mailing

---

### **ADVERTISING AND INFORMATIVE MAILING:**

- Following the general conditions of sale of Transdutec, s.a., our Customers are incorporated to our database, so our customer is going to receive mailings with offers of our products and updates and news referring to these ones. If you want to use your rights of cancellation concerning to this matter, please contact us. In every email you receive, you can unsubscribe yourself if you do not wish to receive more offers or information about the products of Transdutec, s.a.
- 

### **NOTES REFERRING TO THE CATALOGUE**

- The information of the products as well as their references and prices have been revised to make sure that they are right and they are completely updated. However, we can not guarantee that there is no mistake in the descriptions which are shown or that our products are available at any time.
  - Please check with Transdutec, S.A. for the latest catalog revision, current prices and availability at the time of ordering.
  - Likewise, we also inform you that the images that appear in our catalogue and in our website do not imply any contractual commitment. Transdutec offers in this publishing and in the web of the products which are available and possibility to be delivered at the time of publishing the document. However, the circumstances can lead us to offer alternative equipment or changes in their design, which must also go through our exhaustive criteria of product quality.
- 

### **INTELLECTUAL PROPERTY**

- The sale and delivery of products or services by Transdutec, S.A. and does not represent any transfer of property rights, patents, "copyrights", trademark right, technologies, designs, specifications, drawings or any other intellectual property directly or indirectly incorporated to the products.

---

## **@contact us**

C/ Indústria b-1 (Pol. In. Les Pedreres)  
08390 Montgat - Barcelona - SPAIN  
+34 933 810 004

***transdutec@transdutec.com***

***www.transdutec.com***

load cells

